

DATASHEET

LIC3 Rabbit Polyclonal Antibody

CAT. NO. APA12708

KEY FEATURES

Target	LIC3	Source / Host	Rabbit
Reactivity	Human, Mouse, Rat	Clonality	Polyclonal
Applications	WB	Conjugation	Unconjugated
Form / Buffer	Liquid in 0.42% Potassium phosphate, 0.87% Sodium chloride, pH 7.3, 30% glycerol, and 0.01% sodium azide.		Storage at-20°C

BACKGROUND

Acts as one of several non-catalytic accessory components of the cytoplasmic dynein 2 complex (dynein-2 complex), a motor protein complex that drives the movement of cargos along microtubules within cilia and flagella in concert with the intraflagellar transport (IFT) system, facilitating the assembly of these organelles . a motor protein complex that drives the movement of cargos along microtubules within cilia and flagella in concert with the intraflagellar transport (IFT) system, facilitating the assembly of these organelles . Involved in the regulation of ciliary length .

APPLICATION

To ensure optimal assay performance, AREX recommends conducting reagent titration tailored to each testing system for optimal detection results.

WB	1:500 - 1:2000
----	----------------

*Results are sample-specific. Please refer to your local assay conditions and test parameters for reference.

PRODUCT OVERVIEW

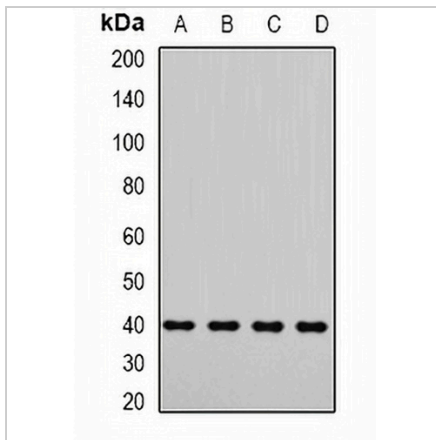
Description	Rabbit polyclonal antibody to LIC3
Specificity	Recognizes endogenous levels of LIC3 protein.
Antibody Type	Primary antibody
Immunogen	Recombinant fusion protein of human LIC3
Purification	The antibody was purified by immunogen affinity chromatography.
Molecular Weight	Predicted: 15; Observed: 38 kD
Form/Buffer	Liquid in 0.42% Potassium phosphate, 0.87% Sodium chloride, pH 7.3, 30% glycerol, and 0.01% sodium azide.
Alternative Names	D2LIC; LIC3; Cytoplasmic dynein 2 light intermediate chain 1; Dynein 2 light intermediate chain
Gene Symbol	DYNC2LI1
Entrez Gene	51626(Human); 213575(Mouse); 298767(Rat)
SwissProt	Q8TCX1(Human); Q8K0T2(Mouse); Q6AY43(Rat)

*AREX continuously optimizes our products. Webpage content may not reflect the latest updates. For inquiries, please contact info@arexbio.com or your local distributor.

*Clone Number, Reactivity, Source/Host and Clonality can be found in the product name and Key Features section above.

DATASHEET**LIC3 Rabbit Polyclonal Antibody**

CAT. NO. APA12708

DATA

Western blot analysis of LIC3 expression in Jurkat (A), A549 (B), mouse testis (C), rat testis (D) whole cell lysates. (Predicted band size: 15; 22; 37; 39 kD; Observed band size: 38 kD)

STORAGE

Store at 4°C short term. For long term storage, store at -20°C, avoiding freeze/thaw cycles.

NOTE

For Research Use Only. Not for diagnostic, therapeutics, prophylactic or in vivo use.