

## DATASHEET

# Geminin Rabbit Polyclonal Antibody

CAT. NO. APA12717

### KEY FEATURES

Target	Geminin	Source / Host	Rabbit
Reactivity	Human, Mouse	Clonality	Polyclonal
Applications	WB, IHC	Conjugation	Unconjugated
Form / Buffer	Liquid in 0.42% Potassium phosphate, 0.87% Sodium chloride, pH 7.3, 30% glycerol, and 0.01% sodium azide.		Storage at-20°C

### BACKGROUND

Inhibits DNA replication by preventing the incorporation of MCM complex into pre-replication complex (pre-RC) . It is degraded during the mitotic phase of the cell cycle . Its destruction at the metaphase-anaphase transition permits replication in the succeeding cell cycle . Inhibits histone acetyltransferase activity of KAT7/HBO1 in a CDT1-dependent manner, inhibiting histone H4 acetylation and DNA replication licensing . Inhibits the transcriptional activity of a subset of Hox proteins, enrolling them in cell proliferative control .

### APPLICATION

To ensure optimal assay performance, AREX recommends conducting reagent titration tailored to each testing system for optimal detection results.

WB	1:500 - 1:2000
IHC	1:50 - 1:200

\*Results are sample-specific. Please refer to your local assay conditions and test parameters for reference.

### PRODUCT OVERVIEW

Description	Rabbit polyclonal antibody to Geminin
Specificity	Recognizes endogenous levels of Geminin protein.
Antibody Type	Primary antibody
Immunogen	Recombinant fusion protein of human Geminin
Purification	The antibody was purified by immunogen affinity chromatography.
Molecular Weight	Predicted: 23 kD; Observed: 24 kD
Form/Buffer	Liquid in 0.42% Potassium phosphate, 0.87% Sodium chloride, pH 7.3, 30% glycerol, and 0.01% sodium azide.
Alternative Names	Geminin
Gene Symbol	GMNN
Entrez Gene	51053(Human); 57441(Mouse)
SwissProt	O75496(Human); O88513(Mouse)

\*AREX continuously optimizes our products. Webpage content may not reflect the latest updates. For inquiries, please contact [info@arexbio.com](mailto:info@arexbio.com) or your local distributor.

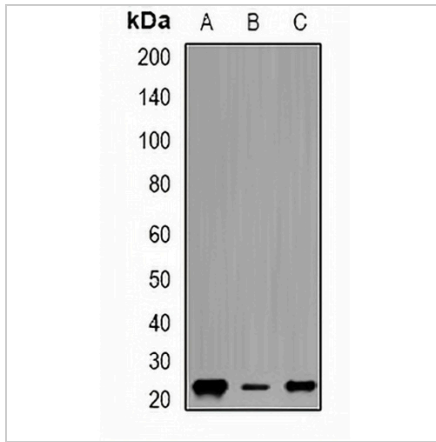
\*Clone Number, Reactivity, Source/Host and Clonality can be found in the product name and Key Features section above.

**DATASHEET**

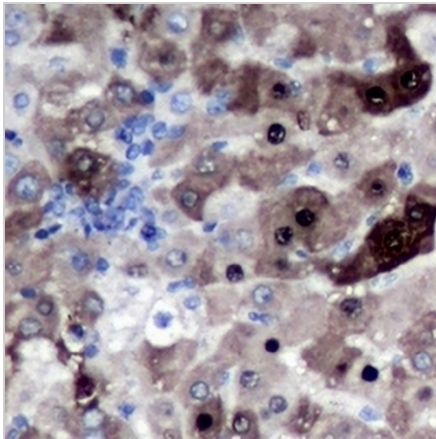
**Geminin Rabbit Polyclonal Antibody**

CAT. NO. APA12717

**DATA**



Western blot analysis of Geminin expression in HepG2 (A), MCF7 (B), K562 (C) whole cell lysates. (Predicted band size: 23 kD; Observed band size: 24 kD)



Immunohistochemical analysis of Geminin staining in human liver cancer formalin fixed paraffin embedded tissue section. The section was pre-treated using heat mediated antigen retrieval with sodium citrate buffer (pH 6.0). The section was then incubated with the antibody at room temperature and detected using an HRP conjugated compact polymer system. DAB was used as the chromogen. The section was then counterstained with haematoxylin and mounted with DPX.

**STORAGE**

Store at 4°C short term. For long term storage, store at -20°C, avoiding freeze/thaw cycles.

**NOTE**

For Research Use Only. Not for diagnostic, therapeutics, prophylactic or in vivo use.