

DATASHEET

Epsilon-sarcoglycan Rabbit Polyclonal Antibody

CAT. NO. APA12719

KEY FEATURES

Target	Epsilon-sarcoglycan	Source / Host	Rabbit
Reactivity	Human, Mouse, Rat	Clonality	Polyclonal
Applications	WB	Conjugation	Unconjugated
Form / Buffer	Liquid in 0.42% Potassium phosphate, 0.87% Sodium chloride, pH 7.3, 30% glycerol, and 0.01% sodium azide.		Storage at -20°C

BACKGROUND

Component of the sarcoglycan complex, a subcomplex of the dystrophin-glycoprotein complex which forms a link between the F-actin cytoskeleton and the extracellular matrix.

APPLICATION

To ensure optimal assay performance, AREX recommends conducting reagent titration tailored to each testing system for optimal detection results.

WB	1:500 - 1:1000
----	----------------

*Results are sample-specific. Please refer to your local assay conditions and test parameters for reference.

PRODUCT OVERVIEW

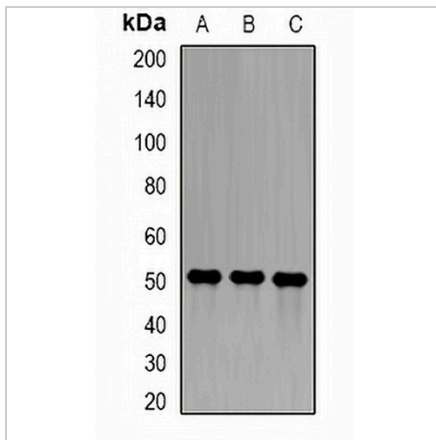
Description	Rabbit polyclonal antibody to Epsilon-sarcoglycan
Specificity	Recognizes endogenous levels of Epsilon-sarcoglycan protein.
Antibody Type	Primary antibody
Immunogen	Recombinant fusion protein of human Epsilon-sarcoglycan
Purification	The antibody was purified by immunogen affinity chromatography.
Molecular Weight	Predicted: 49; Observed: 52 kD
Form/Buffer	Liquid in 0.42% Potassium phosphate, 0.87% Sodium chloride, pH 7.3, 30% glycerol, and 0.01% sodium azide.
Alternative Names	ESG; Epsilon-sarcoglycan; Epsilon-SG
Gene Symbol	SGCE
Entrez Gene	8910(Human); 20392(Mouse); 432360(Rat)
SwissProt	O43556(Human); O70258(Mouse); Q6YAT4(Rat)

*AREX continuously optimizes our products. Webpage content may not reflect the latest updates. For inquiries, please contact info@arexbio.com or your local distributor.

*Clone Number, Reactivity, Source/Host and Clonality can be found in the product name and Key Features section above.

DATASHEET**Epsilon-sarcoglycan Rabbit Polyclonal Antibody**

CAT. NO. APA12719

DATA

Western blot analysis of Epsilon-sarcoglycan expression in A549 (A), ES2 (B), mouse lung (C) whole cell lysates. (Predicted band size: 49; 51; 52 kD; Observed band size: 52 kD)

STORAGE

Store at 4°C short term. For long term storage, store at -20°C, avoiding freeze/thaw cycles.

NOTE

For Research Use Only. Not for diagnostic, therapeutics, prophylactic or in vivo use.