

**DATASHEET**

**GHRH Rabbit Polyclonal Antibody**

CAT. NO. APA12723

**KEY FEATURES**

Target	GHRH	Source / Host	Rabbit
Reactivity	Human, Mouse, Rat	Clonality	Polyclonal
Applications	WB	Conjugation	Unconjugated
Form / Buffer	Liquid in 0.42% Potassium phosphate, 0.87% Sodium chloride, pH 7.3, 30% glycerol, and 0.01% sodium azide.		Storage at -20°C

**BACKGROUND**

GRF is released by the hypothalamus and acts on the adenohypophyse to stimulate the secretion of growth hormone.

**APPLICATION**

To ensure optimal assay performance, AREX recommends conducting reagent titration tailored to each testing system for optimal detection results.

WB	1:500 - 1:1000
----	----------------

\*Results are sample-specific. Please refer to your local assay conditions and test parameters for reference.

**PRODUCT OVERVIEW**

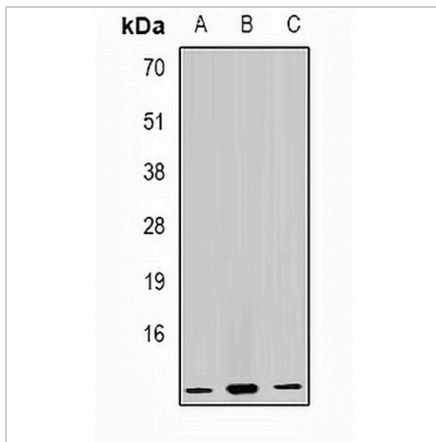
Description	Rabbit polyclonal antibody to GHRH
Specificity	Recognizes endogenous levels of GHRH protein.
Antibody Type	Primary antibody
Immunogen	Recombinant fusion protein of human GHRH
Purification	The antibody was purified by immunogen affinity chromatography.
Molecular Weight	Predicted: 12 kD; Observed: 12 kD
Form/Buffer	Liquid in 0.42% Potassium phosphate, 0.87% Sodium chloride, pH 7.3, 30% glycerol, and 0.01% sodium azide.
Alternative Names	GHRF; Somatoliberin; Growth hormone-releasing factor; GRF; Growth hormone-releasing hormone; GHRH; Somatocrinin; Somatorelin; Sermorelin
Gene Symbol	GHRH
Entrez Gene	2691(Human); 14601(Mouse); 29446(Rat)
SwissProt	P01286(Human); P16043(Mouse); P09916(Rat)

\*AREX continuously optimizes our products. Webpage content may not reflect the latest updates. For inquiries, please contact [info@arexbio.com](mailto:info@arexbio.com) or your local distributor.

\*Clone Number, Reactivity, Source/Host and Clonality can be found in the product name and Key Features section above.

**DATASHEET****GHRH Rabbit Polyclonal Antibody**

CAT. NO. APA12723

**DATA**

Western blot analysis of GHRH expression in Raji (A), HL60 (B), mouse liver (C) whole cell lysates. (Predicted band size: 12 kD; Observed band size: 12 kD)

**STORAGE**

Store at 4°C short term. For long term storage, store at -20°C, avoiding freeze/thaw cycles.

**NOTE**

For Research Use Only. Not for diagnostic, therapeutics, prophylactic or in vivo use.