

DATASHEET

IL-1R3 Rabbit Polyclonal Antibody

CAT. NO. APA12726

KEY FEATURES

Target	IL-1R3	Source / Host	Rabbit
Reactivity	Human, Mouse, Rat	Clonality	Polyclonal
Applications	WB, IHC	Conjugation	Unconjugated
Form / Buffer	Liquid in 0.42% Potassium phosphate, 0.87% Sodium chloride, pH 7.3, 30% glycerol, and 0.01% sodium azide.		Storage at -20°C

BACKGROUND

Coreceptor for IL1RL2 in the IL-36 signaling system . Coreceptor with IL1R1 in the IL-1 signaling system. Associates with IL1R1 bound to IL1B to form the high affinity interleukin-1 receptor complex which mediates interleukin-1-dependent activation of NF-kappa-B and other pathways. Signaling involves the recruitment of adapter molecules such as TOLLIP, MYD88, and IRAK1 or IRAK2 via the respective TIR domains of the receptor/coreceptor subunits. Recruits TOLLIP to the signaling complex. Does not bind to interleukin-1 alone; binding of IL1RN to IL1R1, prevents its association with IL1R1 to form a signaling complex. The cellular response is modulated through a non-signaling association with the membrane IL1R2 decoy receptor. Coreceptor for IL1RL1 in the IL-33 signaling system.

APPLICATION

To ensure optimal assay performance, AREX recommends conducting reagent titration tailored to each testing system for optimal detection results.

WB	1:500 - 1:2000
IHC	1:50 - 1:200

*Results are sample-specific. Please refer to your local assay conditions and test parameters for reference.

PRODUCT OVERVIEW

Description	Rabbit polyclonal antibody to IL-1R3
Specificity	Recognizes endogenous levels of IL-1R3 protein.
Antibody Type	Primary antibody
Immunogen	Recombinant fusion protein of human IL-1R3
Purification	The antibody was purified by immunogen affinity chromatography.
Molecular Weight	Predicted: 39; Observed: 73 kD
Form/Buffer	Liquid in 0.42% Potassium phosphate, 0.87% Sodium chloride, pH 7.3, 30% glycerol, and 0.01% sodium azide.
Alternative Names	C3orf13; IL1R3; Interleukin-1 receptor accessory protein; IL-1 receptor accessory protein; IL-1RACp; Interleukin-1 receptor 3; IL-1R-3; IL-1R3
Gene Symbol	IL1RAP
Entrez Gene	3556(Human); 16180(Mouse); 25466(Rat)
SwissProt	Q9NPH3(Human); Q61730(Mouse); Q63621(Rat)

*AREX continuously optimizes our products. Webpage content may not reflect the latest updates. For inquiries, please contact info@arexbio.com or your local distributor.

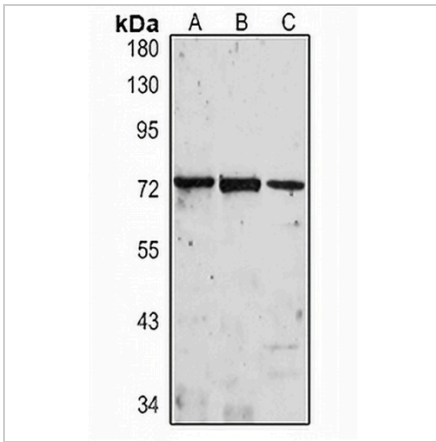
*Clone Number, Reactivity, Source/Host and Clonality can be found in the product name and Key Features section above.

DATASHEET

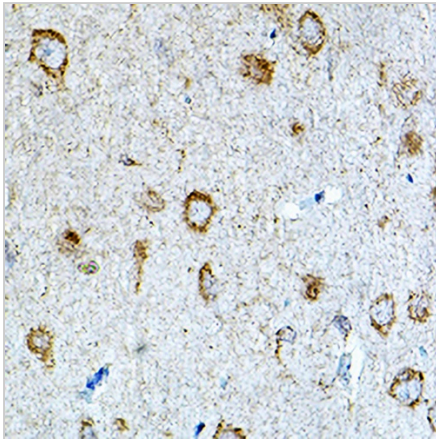
IL-1R3 Rabbit Polyclonal Antibody

CAT. NO. APA12726

DATA



Western blot analysis of IL-1R3 expression in SHSY5Y (A), mouse liver (B), rat liver (C) whole cell lysates. (Predicted band size: 39; 41; 65; 78 kD; Observed band size: 73 kD)



Immunohistochemical analysis of IL-1R3 staining in rat brain formalin fixed paraffin embedded tissue section. The section was pre-treated using heat mediated antigen retrieval with sodium citrate buffer (pH 6.0). The section was then incubated with the antibody at room temperature and detected using an HRP conjugated compact polymer system. DAB was used as the chromogen. The section was then counterstained with haematoxylin and mounted with DPX.

STORAGE

Store at 4°C short term. For long term storage, store at -20°C, avoiding freeze/thaw cycles.

NOTE

For Research Use Only. Not for diagnostic, therapeutics, prophylactic or in vivo use.