

DATASHEET

IMPDH2 Rabbit Polyclonal Antibody

CAT. NO. APA12727

KEY FEATURES

Target	IMPDH2	Source / Host	Rabbit
Reactivity	Human, Mouse, Rat	Clonality	Polyclonal
Applications	WB	Conjugation	Unconjugated
Form / Buffer	Liquid in 0.42% Potassium phosphate, 0.87% Sodium chloride, pH 7.3, 30% glycerol, and 0.01% sodium azide.		Storage at-20°C

BACKGROUND

Catalyzes the conversion of inosine 5'-phosphate (IMP) to xanthosine 5'-phosphate (XMP), the first committed and rate-limiting step in the de novo synthesis of guanine nucleotides, and therefore plays an important role in the regulation of cell growth to xanthosine 5'-phosphate (XMP), the first committed and rate-limiting step in the de novo synthesis of guanine nucleotides, and therefore plays an important role in the regulation of cell growth . Could also have a single-stranded nucleic acid-binding activity and could play a role in RNA and/or DNA metabolism . It may also have a role in the development of malignancy and the growth progression of some tumors.

APPLICATION

To ensure optimal assay performance, AREX recommends conducting reagent titration tailored to each testing system for optimal detection results.

WB	1:500 - 1:1000
----	----------------

*Results are sample-specific. Please refer to your local assay conditions and test parameters for reference.

PRODUCT OVERVIEW

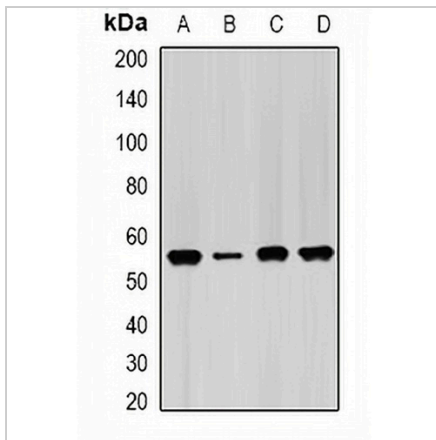
Description	Rabbit polyclonal antibody to IMPDH2
Specificity	Recognizes endogenous levels of IMPDH2 protein.
Antibody Type	Primary antibody
Immunogen	Recombinant fusion protein of human IMPDH2
Purification	The antibody was purified by immunogen affinity chromatography.
Molecular Weight	Predicted: 55 kD; Observed: 56 kD
Form/Buffer	Liquid in 0.42% Potassium phosphate, 0.87% Sodium chloride, pH 7.3, 30% glycerol, and 0.01% sodium azide.
Alternative Names	IMPD2; Inosine-5'-monophosphate dehydrogenase 2; IMP dehydrogenase 2; IMPD 2; IMPDH 2; IMPDH-II
Gene Symbol	IMPDH2
Entrez Gene	3615(Human); 23918(Mouse)
SwissProt	P12268(Human); P24547(Mouse); E9PU28(Rat)

*AREX continuously optimizes our products. Webpage content may not reflect the latest updates. For inquiries, please contact info@arexbio.com or your local distributor.

*Clone Number, Reactivity, Source/Host and Clonality can be found in the product name and Key Features section above.

DATASHEET**IMPDH2 Rabbit Polyclonal Antibody**

CAT. NO. APA12727

DATA

Western blot analysis of IMPDH2 expression in HeLa (A), PC3 (B), mouse spleen (C), mouse heart (D) whole cell lysates. (Predicted band size: 55 kD; Observed band size: 56 kD)

STORAGE

Store at 4°C short term. For long term storage, store at -20°C, avoiding freeze/thaw cycles.

NOTE

For Research Use Only. Not for diagnostic, therapeutics, prophylactic or in vivo use.