

DATASHEET

PSMD7 Rabbit Polyclonal Antibody

CAT. NO. APA12728

KEY FEATURES

Target	PSMD7	Source / Host	Rabbit
Reactivity	Human, Mouse	Clonality	Polyclonal
Applications	WB, IHC, IF/ICC	Conjugation	Unconjugated
Form / Buffer	Liquid in 0.42% Potassium phosphate, 0.87% Sodium chloride, pH 7.3, 30% glycerol, and 0.01% sodium azide.		Storage at -20°C

BACKGROUND

Component of the 26S proteasome, a multiprotein complex involved in the ATP-dependent degradation of ubiquitinated proteins. This complex plays a key role in the maintenance of protein homeostasis by removing misfolded or damaged proteins, which could impair cellular functions, and by removing proteins whose functions are no longer required. Therefore, the proteasome participates in numerous cellular processes, including cell cycle progression, apoptosis, or DNA damage repair.

APPLICATION

To ensure optimal assay performance, AREX recommends conducting reagent titration tailored to each testing system for optimal detection results.

WB	1:500 - 1:2000
IHC	1:50 - 1:200
IF/ICC	1:50 - 1:200

*Results are sample-specific. Please refer to your local assay conditions and test parameters for reference.

PRODUCT OVERVIEW

Description	Rabbit polyclonal antibody to PSMD7
Specificity	Recognizes endogenous levels of PSMD7 protein.
Antibody Type	Primary antibody
Immunogen	Recombinant fusion protein of human PSMD7
Purification	The antibody was purified by immunogen affinity chromatography.
Molecular Weight	Predicted: 37 kD; Observed: 37 kD
Form/Buffer	Liquid in 0.42% Potassium phosphate, 0.87% Sodium chloride, pH 7.3, 30% glycerol, and 0.01% sodium azide.
Alternative Names	MOV34L; 26S proteasome non-ATPase regulatory subunit 7; 26S proteasome regulatory subunit RPN8; 26S proteasome regulatory subunit S12; Mov34 protein homolog; Proteasome subunit p40
Gene Symbol	PSMD7
Entrez Gene	5713(Human); 17463(Mouse)
SwissProt	P51665(Human); P26516(Mouse)

*AREX continuously optimizes our products. Webpage content may not reflect the latest updates. For inquiries, please contact info@arexbio.com or your local distributor.

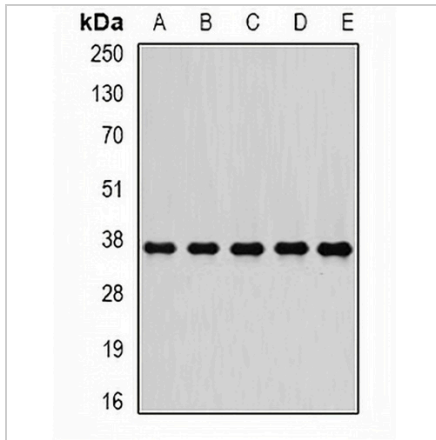
*Clone Number, Reactivity, Source/Host and Clonality can be found in the product name and Key Features section above.

DATASHEET

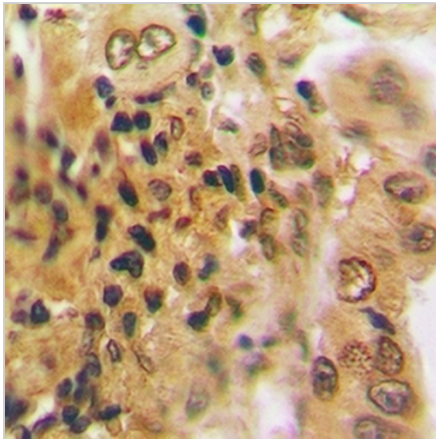
PSMD7 Rabbit Polyclonal Antibody

CAT. NO. APA12728

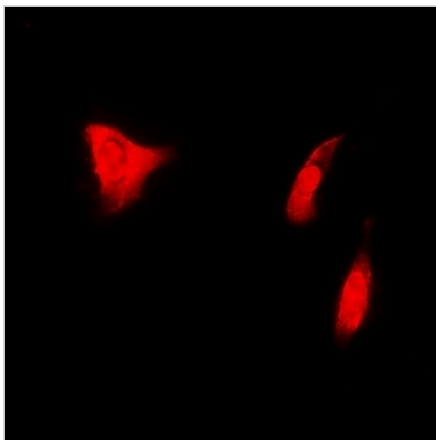
DATA



Western blot analysis of PSMD7 expression in MCF7 (A), A549 (B), K562 (C), mouse heart (D), mouse testis (E) whole cell lysates. (Predicted band size: 37 kD; Observed band size: 37 kD)



Immunohistochemical analysis of PSMD7 staining in human lung cancer formalin fixed paraffin embedded tissue section. The section was pre-treated using heat mediated antigen retrieval with sodium citrate buffer (pH 6.0). The section was then incubated with the antibody at room temperature and detected using an HRP conjugated compact polymer system. DAB was used as the chromogen. The section was then counterstained with haematoxylin and mounted with DPX.



Immunofluorescent analysis of PSMD7 staining in U2OS cells. Formalin-fixed cells were permeabilized with 0.1% Triton X-100 in TBS for 5-10 minutes and blocked with 3% BSA-PBS for 30 minutes at room temperature. Cells were probed with the primary antibody in 3% BSA-PBS and incubated overnight at 4 °C in a humidified chamber. Cells were washed with PBST and incubated with a DyLight 594-conjugated secondary antibody (red) in PBS at room temperature in the dark.

STORAGE

Store at 4°C short term. For long term storage, store at -20°C, avoiding freeze/thaw cycles.

NOTE

For Research Use Only. Not for diagnostic, therapeutics, prophylactic or in vivo use.