

DATASHEET

PA28 alpha Rabbit Polyclonal Antibody

CAT. NO. APA12729

KEY FEATURES

Target	PA28 alpha	Source / Host	Rabbit
Reactivity	Human, Mouse, Rat	Clonality	Polyclonal
Applications	WB, IF/ICC	Conjugation	Unconjugated
Form / Buffer	Liquid in 0.42% Potassium phosphate, 0.87% Sodium chloride, pH 7.3, 30% glycerol, and 0.01% sodium azide.		Storage at -20°C

BACKGROUND

Implicated in immunoproteasome assembly and required for efficient antigen processing. The PA28 activator complex enhances the generation of class I binding peptides by altering the cleavage pattern of the proteasome.

APPLICATION

To ensure optimal assay performance, AREX recommends conducting reagent titration tailored to each testing system for optimal detection results.

WB	1:500 - 1:1000
IF/ICC	1:50 - 1:200

*Results are sample-specific. Please refer to your local assay conditions and test parameters for reference.

PRODUCT OVERVIEW

Description	Rabbit polyclonal antibody to PA28 alpha
Specificity	Recognizes endogenous levels of PA28 alpha protein.
Antibody Type	Primary antibody
Immunogen	Recombinant fusion protein of human PA28 alpha
Purification	The antibody was purified by immunogen affinity chromatography.
Molecular Weight	Predicted: 26; Observed: 28 kD
Form/Buffer	Liquid in 0.42% Potassium phosphate, 0.87% Sodium chloride, pH 7.3, 30% glycerol, and 0.01% sodium azide.
Alternative Names	IF15111; Proteasome activator complex subunit 1; 11S regulator complex subunit alpha; REG-alpha; Activator of multicatalytic protease subunit 1; Interferon gamma up-regulated I-5111 protein; IGUP I-5111; Proteasome activator 28 subunit alpha; PA28a; PA28alpha
Gene Symbol	PSME1
Entrez Gene	5720(Human); 19186(Mouse)
SwissProt	Q06323(Human); P97371(Mouse); Q63797(Rat)

*AREX continuously optimizes our products. Webpage content may not reflect the latest updates. For inquiries, please contact info@arexbio.com or your local distributor.

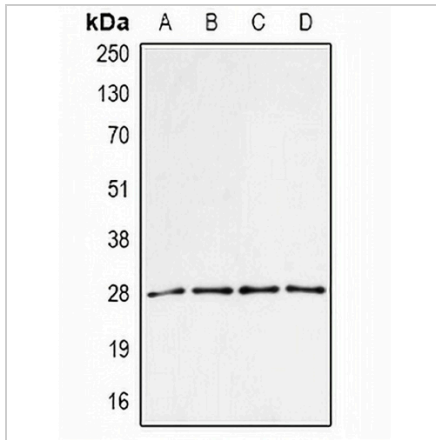
*Clone Number, Reactivity, Source/Host and Clonality can be found in the product name and Key Features section above.

DATASHEET

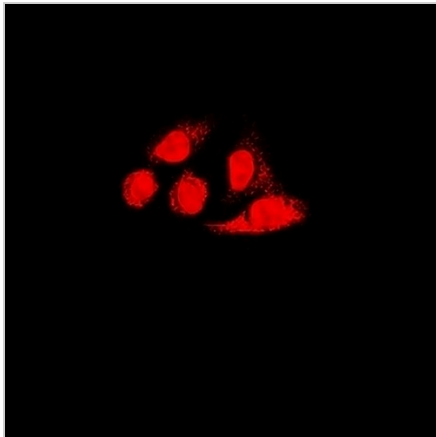
PA28 alpha Rabbit Polyclonal Antibody

CAT. NO. APA12729

DATA



Western blot analysis of PA28 alpha expression in MCF7 (A), BT474 (B), mouse spleen (C), mouse liver (D) whole cell lysates. (Predicted band size: 26; 28 kD; Observed band size: 28 kD)



Immunofluorescent analysis of PA28 alpha staining in U2OS cells. Formalin-fixed cells were permeabilized with 0.1% Triton X-100 in TBS for 5-10 minutes and blocked with 3% BSA-PBS for 30 minutes at room temperature. Cells were probed with the primary antibody in 3% BSA-PBS and incubated overnight at 4 °C in a humidified chamber. Cells were washed with PBST and incubated with a DyLight 594-conjugated secondary antibody (red) in PBS at room temperature in the dark.

STORAGE

Store at 4°C short term. For long term storage, store at -20°C, avoiding freeze/thaw cycles.

NOTE

For Research Use Only. Not for diagnostic, therapeutics, prophylactic or in vivo use.