

DATASHEET

SCP2 Rabbit Polyclonal Antibody

CAT. NO. APA12731

KEY FEATURES

Target	SCP2	Source / Host	Rabbit
Reactivity	Human, Mouse, Rat	Clonality	Polyclonal
Applications	WB, IHC	Conjugation	Unconjugated
Form / Buffer	Liquid in 0.42% Potassium phosphate, 0.87% Sodium chloride, pH 7.3, 30% glycerol, and 0.01% sodium azide.		Storage at -20°C

BACKGROUND

Plays a crucial role in the peroxisomal oxidation of branched-chain fatty acids . Catalyzes the last step of the peroxisomal beta-oxidation of branched chain fatty acids and the side chain of the bile acid intermediates di- and trihydroxycoprostanic acids (DHCA and THCA) . Also active with medium and long straight chain 3-oxoacyl-CoAs. Stimulates the microsomal conversion of 7-dehydrocholesterol to cholesterol and transfers phosphatidylcholine and 7-dehydrocholesterol between membranes, in vitro . Isoforms SCP2 and SCPx cooperate in peroxisomal oxidation of certain naturally occurring tetramethyl-branched fatty acyl-CoAs .

APPLICATION

To ensure optimal assay performance, AREX recommends conducting reagent titration tailored to each testing system for optimal detection results.

WB	1:500 - 1:2000
IHC	1:50 - 1:200

*Results are sample-specific. Please refer to your local assay conditions and test parameters for reference.

PRODUCT OVERVIEW

Description	Rabbit polyclonal antibody to SCP2
Specificity	Recognizes endogenous levels of SCP2 protein.
Antibody Type	Primary antibody
Immunogen	Recombinant fusion protein of human SCP2
Purification	The antibody was purified by immunogen affinity chromatography.
Molecular Weight	Predicted: 6; Observed: 59 kD
Form/Buffer	Liquid in 0.42% Potassium phosphate, 0.87% Sodium chloride, pH 7.3, 30% glycerol, and 0.01% sodium azide.
Alternative Names	Non-specific lipid-transfer protein; NSL-TP; Propanoyl-CoA C-acyltransferase; SCP-chi; SCPX; Sterol carrier protein 2; SCP-2; Sterol carrier protein X; SCP-X
Gene Symbol	SCP2
Entrez Gene	6342(Human); 20280(Mouse); 25541(Rat)
SwissProt	P22307(Human); P32020(Mouse); P11915(Rat)

*AREX continuously optimizes our products. Webpage content may not reflect the latest updates. For inquiries, please contact info@arexbio.com or your local distributor.

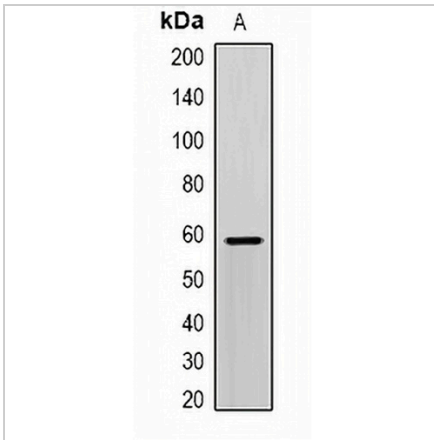
*Clone Number, Reactivity, Source/Host and Clonality can be found in the product name and Key Features section above.

DATASHEET

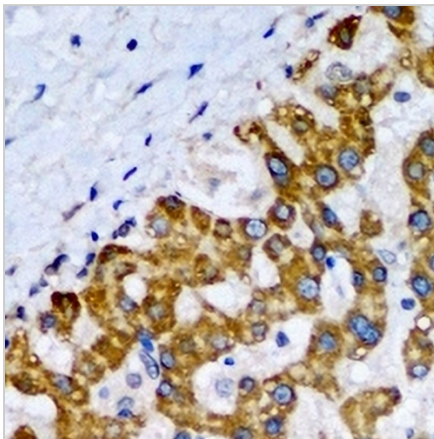
SCP2 Rabbit Polyclonal Antibody

CAT. NO. APA12731

DATA



Western blot analysis of SCP2 expression in HepG2 (A) whole cell lysates. (Predicted band size: 6; 15; 34; 50; 54; 56; 58 kD; Observed band size: 59 kD)



Immunohistochemical analysis of SCP2 staining in human liver cancer formalin fixed paraffin embedded tissue section. The section was pre-treated using heat mediated antigen retrieval with sodium citrate buffer (pH 6.0). The section was then incubated with the antibody at room temperature and detected using an HRP conjugated compact polymer system. DAB was used as the chromogen. The section was then counterstained with haematoxylin and mounted with DPX.

STORAGE

Store at 4°C short term. For long term storage, store at -20°C, avoiding freeze/thaw cycles.

NOTE

For Research Use Only. Not for diagnostic, therapeutics, prophylactic or in vivo use.