

**DATASHEET**

**AP2-alpha-2 Rabbit Polyclonal Antibody**

CAT. NO. APA12732

**KEY FEATURES**

Target	AP2-alpha-2	Source / Host	Rabbit
Reactivity	Human, Mouse, Rat	Clonality	Polyclonal
Applications	WB, IHC	Conjugation	Unconjugated
Form / Buffer	Liquid in 0.42% Potassium phosphate, 0.87% Sodium chloride, pH 7.3, 30% glycerol, and 0.01% sodium azide.		Storage at -20°C

**BACKGROUND**

Component of the adaptor protein complex 2 (AP-2). Adaptor protein complexes function in protein transport via transport vesicles in different membrane traffic pathways. Adaptor protein complexes are vesicle coat components and appear to be involved in cargo selection and vesicle formation. AP-2 is involved in clathrin-dependent endocytosis in which cargo proteins are incorporated into vesicles surrounded by clathrin (clathrin-coated vesicles, CCVs) which are destined for fusion with the early endosome. The clathrin lattice serves as a mechanical scaffold but is itself unable to bind directly to membrane components.

**APPLICATION**

To ensure optimal assay performance, AREX recommends conducting reagent titration tailored to each testing system for optimal detection results.

WB	1:500 - 1:2000
IHC	1:50 - 1:200

\*Results are sample-specific. Please refer to your local assay conditions and test parameters for reference.

**PRODUCT OVERVIEW**

Description	Rabbit polyclonal antibody to AP2-alpha-2
Specificity	Recognizes endogenous levels of AP2-alpha-2 protein.
Antibody Type	Primary antibody
Immunogen	Recombinant fusion protein of human AP2-alpha-2
Purification	The antibody was purified by immunogen affinity chromatography.
Molecular Weight	Predicted: 73; Observed: 104 kD
Form/Buffer	Liquid in 0.42% Potassium phosphate, 0.87% Sodium chloride, pH 7.3, 30% glycerol, and 0.01% sodium azide.
Alternative Names	ADTAB; CLAPA2; HIP9; HYPJ; KIAA0899; AP-2 complex subunit alpha-2; 100 kDa coated vesicle protein C; Adapter-related protein complex 2 subunit alpha-2; Adaptor protein complex AP-2 subunit alpha-2; Alpha-adaptin C; Alpha2-adaptin; Clathrin assembly protein complex 2 alpha-C large chain; Huntingtin yeast partner J; Huntingtin-interacting protein 9; HIP-9; Huntingtin-interacting protein J; Plasma membrane adaptor HA2/AP2 adaptin alpha C subunit
Gene Symbol	AP2A2
Entrez Gene	161(Human); 11772(Mouse)
SwissProt	O94973(Human); P17427(Mouse); P18484(Rat)

\*AREX continuously optimizes our products. Webpage content may not reflect the latest updates. For inquiries, please contact [info@arexbio.com](mailto:info@arexbio.com) or your local distributor.

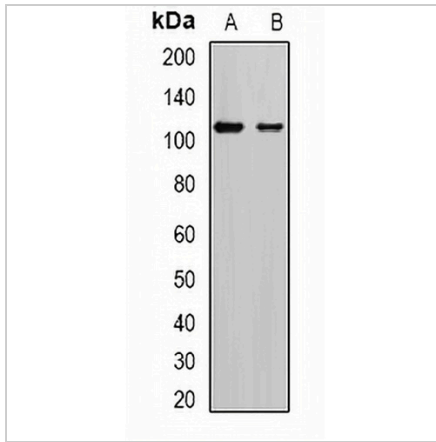
\*Clone Number, Reactivity, Source/Host and Clonality can be found in the product name and Key Features section above.

**DATASHEET**

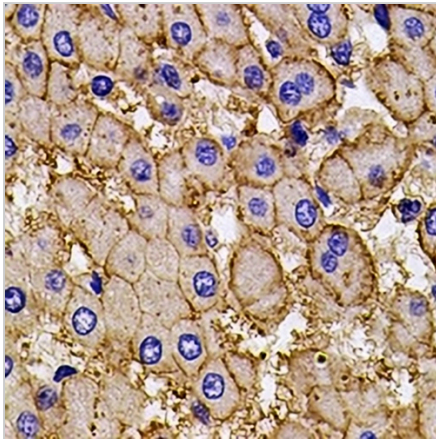
**AP2-alpha-2 Rabbit Polyclonal Antibody**

CAT. NO. APA12732

**DATA**



Western blot analysis of AP2-alpha-2 expression in SKOV3 (A), mouse brain (B) whole cell lysates. (Predicted band size: 73; 103; 104 kD; Observed band size: 104 kD)



Immunohistochemical analysis of AP2-alpha-2 staining in human liver cancer formalin fixed paraffin embedded tissue section. The section was pre-treated using heat mediated antigen retrieval with sodium citrate buffer (pH 6.0). The section was then incubated with the antibody at room temperature and detected using an HRP conjugated compact polymer system. DAB was used as the chromogen. The section was then counterstained with haematoxylin and mounted with DPX.

**STORAGE**

Store at 4°C short term. For long term storage, store at -20°C, avoiding freeze/thaw cycles.

**NOTE**

For Research Use Only. Not for diagnostic, therapeutics, prophylactic or in vivo use.