

**DATASHEET**

**PCCB Rabbit Polyclonal Antibody**

CAT. NO. APA12739

**KEY FEATURES**

Target	PCCB	Source / Host	Rabbit
Reactivity	Human	Clonality	Polyclonal
Applications	WB	Conjugation	Unconjugated
Form / Buffer	Liquid in 0.42% Potassium phosphate, 0.87% Sodium chloride, pH 7.3, 30% glycerol, and 0.01% sodium azide.		Storage at -20°C

**BACKGROUND**

This is one of the 2 subunits of the biotin-dependent propionyl-CoA carboxylase (PCC), a mitochondrial enzyme involved in the catabolism of odd chain fatty acids, branched-chain amino acids isoleucine, threonine, methionine, and valine and other metabolites, a mitochondrial enzyme involved in the catabolism of odd chain fatty acids, branched-chain amino acids isoleucine, threonine, methionine, and valine and other metabolites. Propionyl-CoA carboxylase catalyzes the carboxylation of propionyl-CoA/propanoyl-CoA to D-methylmalonyl-CoA/(S)-methylmalonyl-CoA.

**APPLICATION**

To ensure optimal assay performance, AREX recommends conducting reagent titration tailored to each testing system for optimal detection results.

WB	1:500 - 1:1000
----	----------------

\*Results are sample-specific. Please refer to your local assay conditions and test parameters for reference.

**PRODUCT OVERVIEW**

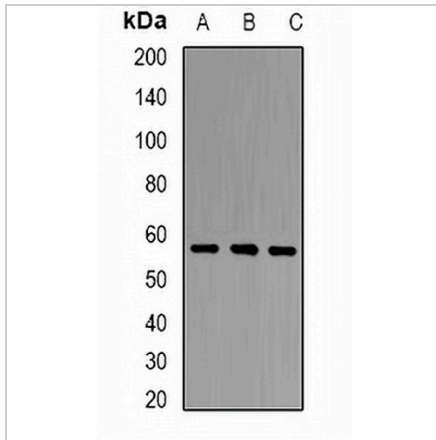
Description	Rabbit polyclonal antibody to PCCB
Specificity	Recognizes endogenous levels of PCCB protein.
Antibody Type	Primary antibody
Immunogen	Recombinant fusion protein of human PCCB
Purification	The antibody was purified by immunogen affinity chromatography.
Molecular Weight	Predicted: 58; Observed: 54 kD
Form/Buffer	Liquid in 0.42% Potassium phosphate, 0.87% Sodium chloride, pH 7.3, 30% glycerol, and 0.01% sodium azide.
Alternative Names	Propionyl-CoA carboxylase beta chain mitochondrial; PCCase subunit beta; Propanoyl-CoA:carbon dioxide ligase subunit beta
Gene Symbol	PCCB
Entrez Gene	5096(Human)
SwissProt	P05166(Human)

\*AREX continuously optimizes our products. Webpage content may not reflect the latest updates. For inquiries, please contact [info@arexbio.com](mailto:info@arexbio.com) or your local distributor.

\*Clone Number, Reactivity, Source/Host and Clonality can be found in the product name and Key Features section above.

**DATASHEET****PCCB Rabbit Polyclonal Antibody**

CAT. NO. APA12739

**DATA**

Western blot analysis of PCCB expression in HT29 (A), mouse liver (B), mouse heart (C) whole cell lysates. (Predicted band size: 58; 60 kD; Observed band size: 54 kD)

**STORAGE**

Store at 4°C short term. For long term storage, store at -20°C, avoiding freeze/thaw cycles.

**NOTE**

For Research Use Only. Not for diagnostic, therapeutics, prophylactic or in vivo use.