

DATASHEET

BCL11A Rabbit Polyclonal Antibody

CAT. NO. APA12742

KEY FEATURES

Target	BCL11A	Source / Host	Rabbit
Reactivity	Human, Mouse, Rat	Clonality	Polyclonal
Applications	WB, IHC	Conjugation	Unconjugated
Form / Buffer	Liquid in 0.42% Potassium phosphate, 0.87% Sodium chloride, pH 7.3, 30% glycerol, and 0.01% sodium azide.		Storage at-20°C

BACKGROUND

Transcription factor . Associated with the BAF SWI/SNF chromatin remodeling complex . Binds to the 5'-TGACCA-3' sequence motif in regulatory regions of target genes, including a distal promoter of the HBG1 hemoglobin subunit gamma-1 gene . Involved in regulation of the developmental switch from gamma- to beta-globin, probably via direct repression of HBG1; hence indirectly repressing fetal hemoglobin (HbF) level . Involved in brain development . May play a role in hematopoiesis . Essential factor in lymphopoiesis required for B-cell formation in fetal liver . May function as a modulator of the transcriptional repression activity of NR2F2 .

APPLICATION

To ensure optimal assay performance, AREX recommends conducting reagent titration tailored to each testing system for optimal detection results.

WB	1:500 - 1:2000
IHC	1:50 - 1:200

*Results are sample-specific. Please refer to your local assay conditions and test parameters for reference.

PRODUCT OVERVIEW

Description	Rabbit polyclonal antibody to BCL11A
Specificity	Recognizes endogenous levels of BCL11A protein.
Antibody Type	Primary antibody
Immunogen	Recombinant fusion protein of human BCL11A
Purification	The antibody was purified by immunogen affinity chromatography.
Molecular Weight	Predicted: 15; Observed: 113 kD
Form/Buffer	Liquid in 0.42% Potassium phosphate, 0.87% Sodium chloride, pH 7.3, 30% glycerol, and 0.01% sodium azide.
Alternative Names	CTIP1; EVI9; KIAA1809; ZNF856; B-cell lymphoma/leukemia 11A; BCL-11A; B-cell CLL/lymphoma 11A; COUP-TF-interacting protein 1; Ecotropic viral integration site 9 protein homolog; EVI-9; Zinc finger protein 856
Gene Symbol	BCL11A
Entrez Gene	53335(Human); 14025(Mouse)
SwissProt	Q9H165(Human); Q9QYE3(Mouse)

*AREX continuously optimizes our products. Webpage content may not reflect the latest updates. For inquiries, please contact info@arexbio.com or your local distributor.

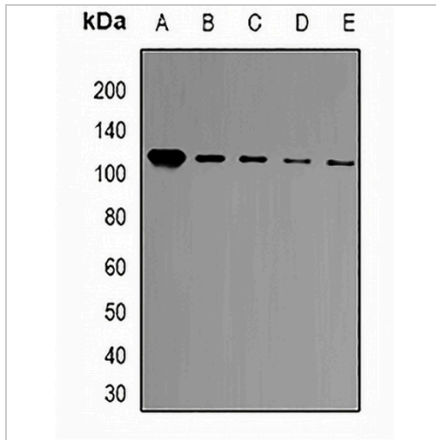
*Clone Number, Reactivity, Source/Host and Clonality can be found in the product name and Key Features section above.

DATASHEET

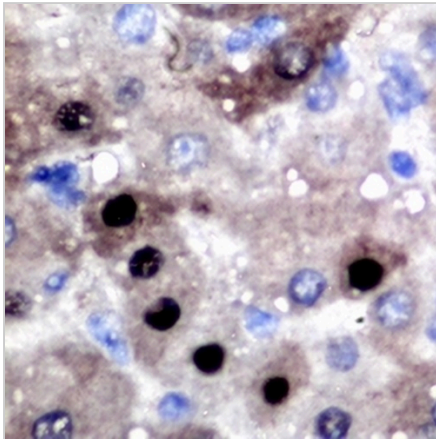
BCL11A Rabbit Polyclonal Antibody

CAT. NO. APA12742

DATA



Western blot analysis of BCL11A expression in HT29 (A), Jurkat (B), HeLa (C), A549 (D), mouse brain (E) whole cell lysates. (Predicted band size: 15; 26; 30; 83; 86; 87; 91 kD; Observed band size: 113 kD)



Immunohistochemical analysis of BCL11A staining in human liver cancer formalin fixed paraffin embedded tissue section. The section was pre-treated using heat mediated antigen retrieval with sodium citrate buffer (pH 6.0). The section was then incubated with the antibody at room temperature and detected using an HRP conjugated compact polymer system. DAB was used as the chromogen. The section was then counterstained with haematoxylin and mounted with DPX.

STORAGE

Store at 4°C short term. For long term storage, store at -20°C, avoiding freeze/thaw cycles.

NOTE

For Research Use Only. Not for diagnostic, therapeutics, prophylactic or in vivo use.