

**DATASHEET**

**Lamin B Receptor Rabbit Polyclonal Antibody**

CAT. NO. APA12750

**KEY FEATURES**

Target	Lamin B Receptor	Source / Host	Rabbit
Reactivity	Human, Mouse, Rat	Clonality	Polyclonal
Applications	WB, IF/ICC	Conjugation	Unconjugated
Form / Buffer	Liquid in 0.42% Potassium phosphate, 0.87% Sodium chloride, pH 7.3, 30% glycerol, and 0.01% sodium azide.		Storage at -20°C

**BACKGROUND**

Catalyzes the reduction of the C14-unsaturated bond of lanosterol, as part of the metabolic pathway leading to cholesterol biosynthesis . Plays a critical role in myeloid cell cholesterol biosynthesis which is essential to both myeloid cell growth and functional maturation . Mediates the activation of NADPH oxidases, perhaps by maintaining critical levels of cholesterol required for membrane lipid raft formation during neutrophil differentiation . Anchors the lamina and the heterochromatin to the inner nuclear membrane .

**APPLICATION**

To ensure optimal assay performance, AREX recommends conducting reagent titration tailored to each testing system for optimal detection results.

WB	1:500 - 1:1000
IF/ICC	1:50 - 1:200

\*Results are sample-specific. Please refer to your local assay conditions and test parameters for reference.

**PRODUCT OVERVIEW**

Description	Rabbit polyclonal antibody to Lamin B Receptor
Specificity	Recognizes endogenous levels of Lamin B Receptor protein.
Antibody Type	Primary antibody
Immunogen	Recombinant fusion protein of human Lamin B Receptor
Purification	The antibody was purified by immunogen affinity chromatography.
Molecular Weight	Predicted: 70 kD; Observed: 70 kD
Form/Buffer	Liquid in 0.42% Potassium phosphate, 0.87% Sodium chloride, pH 7.3, 30% glycerol, and 0.01% sodium azide.
Alternative Names	Lamin-B receptor; Integral nuclear envelope inner membrane protein; LMN2R
Gene Symbol	LBR
Entrez Gene	3930(Human); 98386(Mouse); 89789(Rat)
SwissProt	Q14739(Human); Q3U9G9(Mouse); O08984(Rat)

\*AREX continuously optimizes our products. Webpage content may not reflect the latest updates. For inquiries, please contact [info@arexbio.com](mailto:info@arexbio.com) or your local distributor.

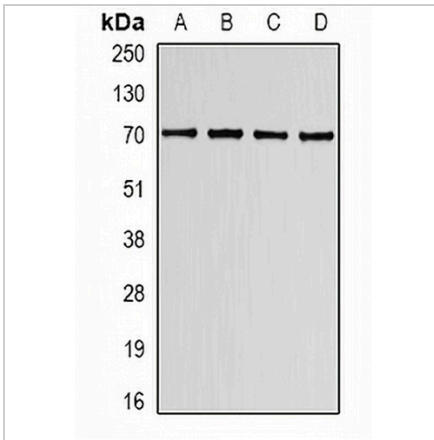
\*Clone Number, Reactivity, Source/Host and Clonality can be found in the product name and Key Features section above.

**DATASHEET**

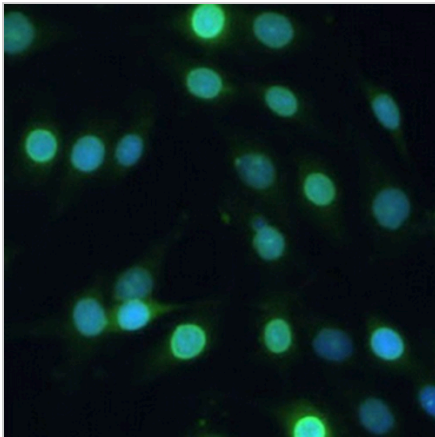
**Lamin B Receptor Rabbit Polyclonal Antibody**

CAT. NO. APA12750

**DATA**



Western blot analysis of Lamin B Receptor expression in K562 (A), HT29 (B), mouse spleen (C), mouse lung (D) whole cell lysates. (Predicted band size: 70 kD; Observed band size: 70 kD)



Immunofluorescent analysis of Lamin B Receptor staining in C6 cells. Formalin-fixed cells were permeabilized with 0.1% Triton X-100 in TBS for 5-10 minutes and blocked with 3% BSA-PBS for 30 minutes at room temperature. Cells were probed with the primary antibody in 3% BSA-PBS and incubated overnight at 4 °C in a humidified chamber. Cells were washed with PBST and incubated with a AREX® Fluor 488 -conjugated secondary antibody (green) in PBS at room temperature in the dark. DAPI was used to stain the cell nuclei (blue).

**STORAGE**

Store at 4°C short term. For long term storage, store at -20°C, avoiding freeze/thaw cycles.

**NOTE**

For Research Use Only. Not for diagnostic, therapeutics, prophylactic or in vivo use.