

DATASHEET

RFC4 Rabbit Polyclonal Antibody

CAT. NO. APA12754

KEY FEATURES

Target	RFC4	Source / Host	Rabbit
Reactivity	Human, Mouse	Clonality	Polyclonal
Applications	WB, IF/ICC, IP	Conjugation	Unconjugated
Form / Buffer	Liquid in 0.42% Potassium phosphate, 0.87% Sodium chloride, pH 7.3, 30% glycerol, and 0.01% sodium azide.		Storage at -20°C

BACKGROUND

Subunit of the replication factor C (RFC) complex which acts during elongation of primed DNA templates by DNA polymerases delta and epsilon, and is necessary for ATP-dependent loading of proliferating cell nuclear antigen (PCNA) onto primed DNA. The RFC4 subunit probably functions as a scaffold on which the other complex components can assemble.

APPLICATION

To ensure optimal assay performance, AREX recommends conducting reagent titration tailored to each testing system for optimal detection results.

WB	1:500 - 1:1000
IF/ICC	1:50 - 1:200
IP	1:10 - 1:50

*Results are sample-specific. Please refer to your local assay conditions and test parameters for reference.

PRODUCT OVERVIEW

Description	Rabbit polyclonal antibody to RFC4
Specificity	Recognizes endogenous levels of RFC4 protein.
Antibody Type	Primary antibody
Immunogen	Recombinant fusion protein of human RFC4
Purification	The antibody was purified by immunogen affinity chromatography.
Molecular Weight	Predicted: 33; Observed: 40 kD
Form/Buffer	Liquid in 0.42% Potassium phosphate, 0.87% Sodium chloride, pH 7.3, 30% glycerol, and 0.01% sodium azide.
Alternative Names	Replication factor C subunit 4; Activator 1 37 kDa subunit; A1 37 kDa subunit; Activator 1 subunit 4; Replication factor C 37 kDa subunit; RF-C 37 kDa subunit; RFC37
Gene Symbol	RFC4
Entrez Gene	5984(Human)
SwissProt	P35249(Human)

*AREX continuously optimizes our products. Webpage content may not reflect the latest updates. For inquiries, please contact info@arexbio.com or your local distributor.

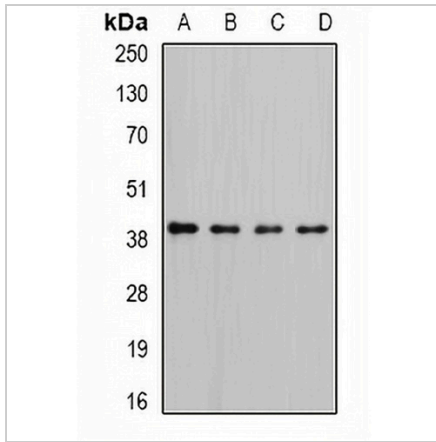
*Clone Number, Reactivity, Source/Host and Clonality can be found in the product name and Key Features section above.

DATASHEET

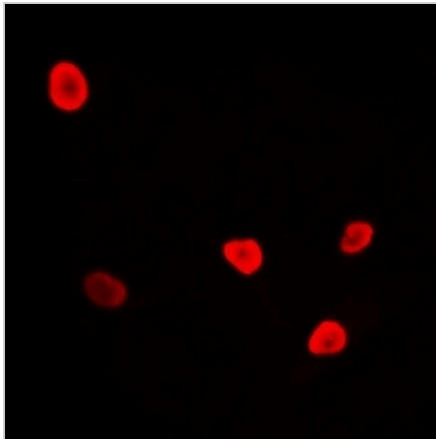
RFC4 Rabbit Polyclonal Antibody

CAT. NO. APA12754

DATA



Western blot analysis of RFC4 expression in HeLa (A), K562 (B), HepG2 (C), MCF7 (D) whole cell lysates. (Predicted band size: 33; 39 kD; Observed band size: 40 kD)



Immunofluorescent analysis of RFC4 staining in U2OS cells. Formalin-fixed cells were permeabilized with 0.1% Triton X-100 in TBS for 5-10 minutes and blocked with 3% BSA-PBS for 30 minutes at room temperature. Cells were probed with the primary antibody in 3% BSA-PBS and incubated overnight at 4 °C in a humidified chamber. Cells were washed with PBST and incubated with a DyLight 594-conjugated secondary antibody (red) in PBS at room temperature in the dark.

STORAGE

Store at 4°C short term. For long term storage, store at -20°C, avoiding freeze/thaw cycles.

NOTE

For Research Use Only. Not for diagnostic, therapeutics, prophylactic or in vivo use.