

DATASHEET

RBAT Rabbit Polyclonal Antibody

CAT. NO. APA12758

KEY FEATURES

Target	RBAT	Source / Host	Rabbit
Reactivity	Human, Mouse, Rat	Clonality	Polyclonal
Applications	WB, IHC	Conjugation	Unconjugated
Form / Buffer	Liquid in 0.42% Potassium phosphate, 0.87% Sodium chloride, pH 7.3, 30% glycerol, and 0.01% sodium azide.		Storage at -20°C

BACKGROUND

Acts as a chaperone that facilitates biogenesis and trafficking of functional transporter heteromers to the plasma membrane. Associates with SLC7A9 to form a functional transporter complex that mediates the electrogenic exchange between cationic amino acids and neutral amino acids, with a stoichiometry of 1:1. SLC7A9-SLC3A1 transporter has system b(0,+)-like activity with high affinity for extracellular cationic amino acids and L-cystine and lower affinity for intracellular neutral amino acids. Substrate exchange is driven by high concentration of intracellular neutral amino acids and the intracellular reduction of L-cystine to L-cysteine.

APPLICATION

To ensure optimal assay performance, AREX recommends conducting reagent titration tailored to each testing system for optimal detection results.

WB	1:500 - 1:1000
IHC	1:50 - 1:200

*Results are sample-specific. Please refer to your local assay conditions and test parameters for reference.

PRODUCT OVERVIEW

Description	Rabbit polyclonal antibody to RBAT
Specificity	Recognizes endogenous levels of RBAT protein.
Antibody Type	Primary antibody
Immunogen	Recombinant fusion protein of human RBAT
Purification	The antibody was purified by immunogen affinity chromatography.
Molecular Weight	Predicted: 35; Observed: 79 kD
Form/Buffer	Liquid in 0.42% Potassium phosphate, 0.87% Sodium chloride, pH 7.3, 30% glycerol, and 0.01% sodium azide.
Alternative Names	RBAT; Neutral and basic amino acid transport protein rBAT; NBAT; D2h; Solute carrier family 3 member 1; b(0,+)-type amino acid transport protein
Gene Symbol	SLC3A1
Entrez Gene	6519(Human); 29484(Rat)
SwissProt	Q07837(Human); Q91WV7(Mouse); Q64319(Rat)

*AREX continuously optimizes our products. Webpage content may not reflect the latest updates. For inquiries, please contact info@arexbio.com or your local distributor.

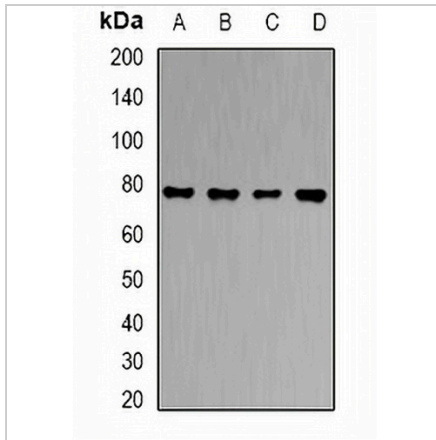
*Clone Number, Reactivity, Source/Host and Clonality can be found in the product name and Key Features section above.

DATASHEET

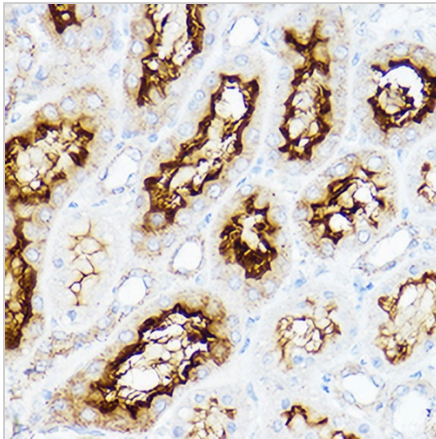
RBAT Rabbit Polyclonal Antibody

CAT. NO. APA12758

DATA



Western blot analysis of RBAT expression in HT29 (A), HepG2 (B), PC12 (C), mouse liver (D) whole cell lysates. (Predicted band size: 35; 45; 46; 57; 63; 65; 78 kD; Observed band size: 79 kD)



Immunohistochemical analysis of RBAT staining in rat kidney formalin fixed paraffin embedded tissue section. The section was pre-treated using heat mediated antigen retrieval with sodium citrate buffer (pH 6.0). The section was then incubated with the antibody at room temperature and detected using an HRP conjugated compact polymer system. DAB was used as the chromogen. The section was then counterstained with haematoxylin and mounted with DPX.

STORAGE

Store at 4°C short term. For long term storage, store at -20°C, avoiding freeze/thaw cycles.

NOTE

For Research Use Only. Not for diagnostic, therapeutics, prophylactic or in vivo use.