

## DATASHEET

# PNMTase Rabbit Polyclonal Antibody

CAT. NO. APA12762

### KEY FEATURES

Target	PNMTase	Source / Host	Rabbit
Reactivity	Human, Mouse	Clonality	Polyclonal
Applications	WB	Conjugation	Unconjugated
Form / Buffer	Liquid in 0.42% Potassium phosphate, 0.87% Sodium chloride, pH 7.3, 30% glycerol, and 0.01% sodium azide.		Storage at -20°C

### BACKGROUND

Catalyzes the transmethylation of norepinephrine (noradrenaline) to form epinephrine (adrenaline), using S-adenosyl-L-methionine as the methyl donor to form epinephrine (adrenaline), using S-adenosyl-L-methionine as the methyl donor. Other substrates include phenylethanolamine and octopamine. Also methylates normetanephrine.

### APPLICATION

To ensure optimal assay performance, AREX recommends conducting reagent titration tailored to each testing system for optimal detection results.

WB	1:500 - 1:1000
----	----------------

\*Results are sample-specific. Please refer to your local assay conditions and test parameters for reference.

### PRODUCT OVERVIEW

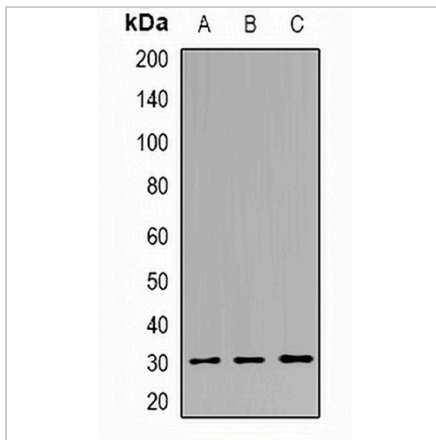
Description	Rabbit polyclonal antibody to PNMTase
Specificity	Recognizes endogenous levels of PNMTase protein.
Antibody Type	Primary antibody
Immunogen	Recombinant fusion protein of human PNMTase
Purification	The antibody was purified by immunogen affinity chromatography.
Molecular Weight	Predicted: 30 kD; Observed: 31 kD
Form/Buffer	Liquid in 0.42% Potassium phosphate, 0.87% Sodium chloride, pH 7.3, 30% glycerol, and 0.01% sodium azide.
Alternative Names	PENT; Phenylethanolamine N-methyltransferase; PNMTase; Noradrenaline N-methyltransferase
Gene Symbol	PNMT
Entrez Gene	5409(Human); 18948(Mouse)
SwissProt	P11086(Human); P40935(Mouse)

\*AREX continuously optimizes our products. Webpage content may not reflect the latest updates. For inquiries, please contact [info@arexbio.com](mailto:info@arexbio.com) or your local distributor.

\*Clone Number, Reactivity, Source/Host and Clonality can be found in the product name and Key Features section above.

**DATASHEET****PNMTase Rabbit Polyclonal Antibody**

CAT. NO. APA12762

**DATA**

Western blot analysis of PNMTase expression in K562 (A), mouse liver (B), mouse heart (C) whole cell lysates. (Predicted band size: 30 kD; Observed band size: 31 kD)

**STORAGE**

Store at 4°C short term. For long term storage, store at -20°C, avoiding freeze/thaw cycles.

**NOTE**

For Research Use Only. Not for diagnostic, therapeutics, prophylactic or in vivo use.