

DATASHEET

PSMF1 Rabbit Polyclonal Antibody

CAT. NO. APA12763

KEY FEATURES

Target	PSMF1	Source / Host	Rabbit
Reactivity	Human, Mouse, Rat	Clonality	Polyclonal
Applications	WB, IF/ICC	Conjugation	Unconjugated
Form / Buffer	Liquid in 0.42% Potassium phosphate, 0.87% Sodium chloride, pH 7.3, 30% glycerol, and 0.01% sodium azide.		Storage at -20°C

BACKGROUND

Plays an important role in control of proteasome function. Inhibits the hydrolysis of protein and peptide substrates by the 20S proteasome. Also inhibits the activation of the proteasome by the proteasome regulatory proteins PA700 and PA28.

APPLICATION

To ensure optimal assay performance, AREX recommends conducting reagent titration tailored to each testing system for optimal detection results.

WB	1:500 - 1:1000
IF/ICC	1:50 - 1:200

*Results are sample-specific. Please refer to your local assay conditions and test parameters for reference.

PRODUCT OVERVIEW

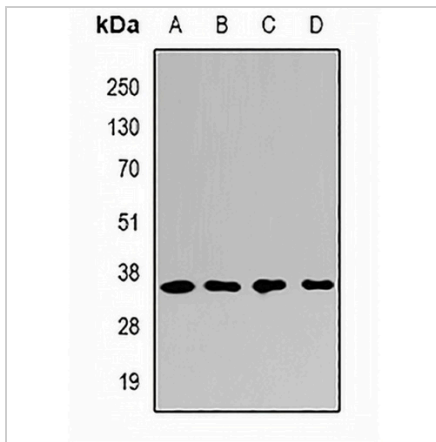
Description	Rabbit polyclonal antibody to PSMF1
Specificity	Recognizes endogenous levels of PSMF1 protein.
Antibody Type	Primary antibody
Immunogen	Recombinant fusion protein of human PSMF1
Purification	The antibody was purified by immunogen affinity chromatography.
Molecular Weight	Predicted: 29 kD; Observed: 35 kD
Form/Buffer	Liquid in 0.42% Potassium phosphate, 0.87% Sodium chloride, pH 7.3, 30% glycerol, and 0.01% sodium azide.
Alternative Names	Proteasome inhibitor PI31 subunit; hPI31
Gene Symbol	PSMF1
Entrez Gene	9491(Human); 228769(Mouse); 689852(Rat)
SwissProt	Q92530(Human); Q8BHL8(Mouse); Q5XIU5(Rat)

*AREX continuously optimizes our products. Webpage content may not reflect the latest updates. For inquiries, please contact info@arexbio.com or your local distributor.

*Clone Number, Reactivity, Source/Host and Clonality can be found in the product name and Key Features section above.

DATASHEET**PSMF1 Rabbit Polyclonal Antibody**

CAT. NO. APA12763

DATA

Western blot analysis of PSMF1 expression in A549 (A), K562 (B), mouse liver (C), mouse testis (D) whole cell lysates. (Predicted band size: 29 kD; Observed band size: 35 kD)

STORAGE

Store at 4°C short term. For long term storage, store at -20°C, avoiding freeze/thaw cycles.

NOTE

For Research Use Only. Not for diagnostic, therapeutics, prophylactic or in vivo use.