

DATASHEET

PA28 beta Rabbit Polyclonal Antibody

CAT. NO. APA12766

KEY FEATURES

Target	PA28 beta	Source / Host	Rabbit
Reactivity	Human, Mouse, Rat	Clonality	Polyclonal
Applications	WB, IHC	Conjugation	Unconjugated
Form / Buffer	Liquid in 0.42% Potassium phosphate, 0.87% Sodium chloride, pH 7.3, 30% glycerol, and 0.01% sodium azide.		Storage at -20°C

BACKGROUND

Implicated in immunoproteasome assembly and required for efficient antigen processing. The PA28 activator complex enhances the generation of class I binding peptides by altering the cleavage pattern of the proteasome.

APPLICATION

To ensure optimal assay performance, AREX recommends conducting reagent titration tailored to each testing system for optimal detection results.

WB	1:500 - 1:2000
IHC	1:50 - 1:200

*Results are sample-specific. Please refer to your local assay conditions and test parameters for reference.

PRODUCT OVERVIEW

Description	Rabbit polyclonal antibody to PA28 beta
Specificity	Recognizes endogenous levels of PA28 beta protein.
Antibody Type	Primary antibody
Immunogen	Recombinant fusion protein of human PA28 beta
Purification	The antibody was purified by immunogen affinity chromatography.
Molecular Weight	Predicted: 27 kD; Observed: 27 kD
Form/Buffer	Liquid in 0.42% Potassium phosphate, 0.87% Sodium chloride, pH 7.3, 30% glycerol, and 0.01% sodium azide.
Alternative Names	Proteasome activator complex subunit 2; 11S regulator complex subunit beta; REG-beta; Activator of multicatalytic protease subunit 2; Proteasome activator 28 subunit beta; PA28b; PA28beta
Gene Symbol	PSME2
Entrez Gene	5721(Human); 19188; 621823(Mouse); 29614(Rat)
SwissProt	Q9UL46(Human); P97372(Mouse); Q63798(Rat)

*AREX continuously optimizes our products. Webpage content may not reflect the latest updates. For inquiries, please contact info@arexbio.com or your local distributor.

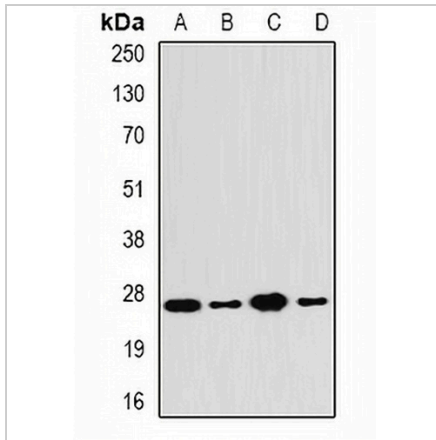
*Clone Number, Reactivity, Source/Host and Clonality can be found in the product name and Key Features section above.

DATASHEET

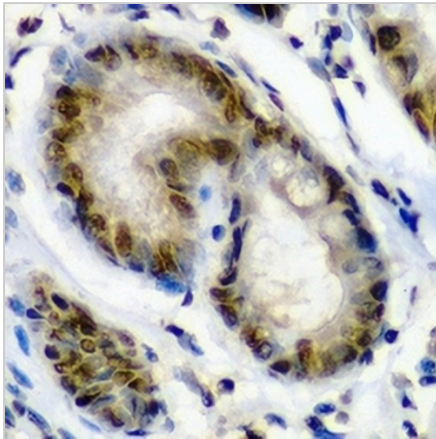
PA28 beta Rabbit Polyclonal Antibody

CAT. NO. APA12766

DATA



Western blot analysis of PA28 beta expression in SW480 (A), HepG2 (B), mouse liver (C), mouse lung (D) whole cell lysates. (Predicted band size: 27 kD; Observed band size: 27 kD)



Immunohistochemical analysis of PA28 beta staining in human gastric cancer formalin fixed paraffin embedded tissue section. The section was pre-treated using heat mediated antigen retrieval with sodium citrate buffer (pH 6.0). The section was then incubated with the antibody at room temperature and detected using an HRP conjugated compact polymer system. DAB was used as the chromogen. The section was then counterstained with haematoxylin and mounted with DPX.

STORAGE

Store at 4°C short term. For long term storage, store at -20°C, avoiding freeze/thaw cycles.

NOTE

For Research Use Only. Not for diagnostic, therapeutics, prophylactic or in vivo use.