

DATASHEET

SH2B1 Rabbit Polyclonal Antibody

CAT. NO. APA12768

KEY FEATURES

Target	SH2B1	Source / Host	Rabbit
Reactivity	Human, Mouse, Rat	Clonality	Polyclonal
Applications	WB, IF/ICC	Conjugation	Unconjugated
Form / Buffer	Liquid in 0.42% Potassium phosphate, 0.87% Sodium chloride, pH 7.3, 30% glycerol, and 0.01% sodium azide.		Storage at -20°C

BACKGROUND

Adapter protein for several members of the tyrosine kinase receptor family. Involved in multiple signaling pathways mediated by Janus kinase (JAK) and receptor tyrosine kinases, including the receptors of insulin (INS), insulin-like growth factor 1 (IGF1), nerve growth factor (NGF), brain-derived neurotrophic factor (BDNF), glial cell line-derived neurotrophic factor (GDNF), platelet-derived growth factor (PDGF) and fibroblast growth factors (FGFs). In growth hormone (GH) signaling, autophosphorylated ("Tyr-813") JAK2 recruits SH2B1, which in turn is phosphorylated by JAK2 on tyrosine residues. These phosphotyrosines form potential binding sites for other signaling proteins.

APPLICATION

To ensure optimal assay performance, AREX recommends conducting reagent titration tailored to each testing system for optimal detection results.

WB	1:500 - 1:2000
IF/ICC	1:50 - 1:200

*Results are sample-specific. Please refer to your local assay conditions and test parameters for reference.

PRODUCT OVERVIEW

Description	Rabbit polyclonal antibody to SH2B1
Specificity	Recognizes endogenous levels of SH2B1 protein.
Antibody Type	Primary antibody
Immunogen	Recombinant fusion protein of human SH2B1
Purification	The antibody was purified by immunogen affinity chromatography.
Molecular Weight	Predicted: 70; Observed: 79 kD
Form/Buffer	Liquid in 0.42% Potassium phosphate, 0.87% Sodium chloride, pH 7.3, 30% glycerol, and 0.01% sodium azide.
Alternative Names	KIAA1299; SH2B; SH2B adapter protein 1; Pro-rich, PH and SH2 domain-containing signaling mediator; PSM; SH2 domain-containing protein 1B
Gene Symbol	SH2B1
Entrez Gene	25970(Human); 20399(Mouse); 89817(Rat)
SwissProt	Q9NRF2(Human); Q91ZM2(Mouse); Q62985(Rat)

*AREX continuously optimizes our products. Webpage content may not reflect the latest updates. For inquiries, please contact info@arexbio.com or your local distributor.

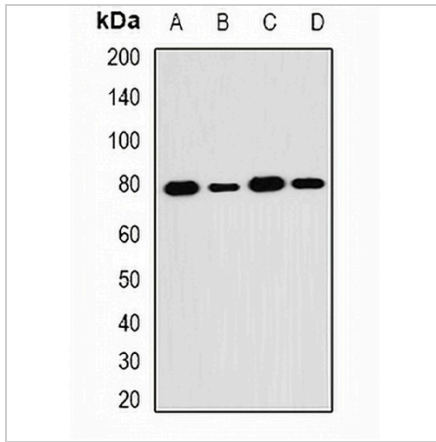
*Clone Number, Reactivity, Source/Host and Clonality can be found in the product name and Key Features section above.

DATASHEET

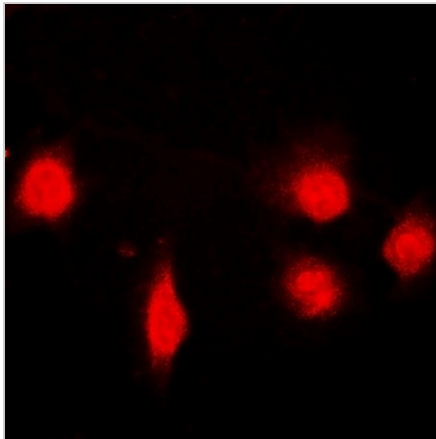
SH2B1 Rabbit Polyclonal Antibody

CAT. NO. APA12768

DATA



Western blot analysis of SH2B1 expression in HT29 (A), MCF7 (B), mouse kidney (C), mouse brain (D) whole cell lysates. (Predicted band size: 70; 72; 79 kD; Observed band size: 79 kD)



Immunofluorescent analysis of SH2B1 staining in U2OS cells. Formalin-fixed cells were permeabilized with 0.1% Triton X-100 in TBS for 5-10 minutes and blocked with 3% BSA-PBS for 30 minutes at room temperature. Cells were probed with the primary antibody in 3% BSA-PBS and incubated overnight at 4 °C in a humidified chamber. Cells were washed with PBST and incubated with a DyLight 594-conjugated secondary antibody (red) in PBS at room temperature in the dark.

STORAGE

Store at 4°C short term. For long term storage, store at -20°C, avoiding freeze/thaw cycles.

NOTE

For Research Use Only. Not for diagnostic, therapeutics, prophylactic or in vivo use.