

**DATASHEET**

**MeCP2 Rabbit Polyclonal Antibody**

CAT. NO. APA12780

**KEY FEATURES**

Target	MeCP2	Source / Host	Rabbit
Reactivity	Mouse, Rat	Clonality	Polyclonal
Applications	WB	Conjugation	Unconjugated
Form / Buffer	Liquid in 0.42% Potassium phosphate, 0.87% Sodium chloride, pH 7.3, 30% glycerol, and 0.01% sodium azide.		Storage at -20°C

**BACKGROUND**

Chromosomal protein that binds to methylated DNA. It can bind specifically to a single methyl-CpG pair. It is not influenced by sequences flanking the methyl-CpGs. Mediates transcriptional repression through interaction with histone deacetylase and the corepressor SIN3A. Binds both 5-methylcytosine (5mC) and 5-hydroxymethylcytosine (5hmC)-containing DNA, with a preference for 5-methylcytosine (5mC).

**APPLICATION**

To ensure optimal assay performance, AREX recommends conducting reagent titration tailored to each testing system for optimal detection results.

WB	1:500 - 1:1000
----	----------------

\*Results are sample-specific. Please refer to your local assay conditions and test parameters for reference.

**PRODUCT OVERVIEW**

Description	Rabbit polyclonal antibody to MeCP2
Specificity	Recognizes endogenous levels of MeCP2 protein.
Antibody Type	Primary antibody
Immunogen	KLH-conjugated synthetic peptide of human MeCP2
Purification	The antibody was purified by immunogen affinity chromatography.
Molecular Weight	Predicted: 52; Observed: 80 kD
Form/Buffer	Liquid in 0.42% Potassium phosphate, 0.87% Sodium chloride, pH 7.3, 30% glycerol, and 0.01% sodium azide.
Alternative Names	Methyl-CpG-binding protein 2; MeCp-2 protein; MeCp2
Gene Symbol	MECP2
Entrez Gene	4204(Human); 17257(Mouse); 29386(Rat)
SwissProt	P51608(Human); Q9Z2D6(Mouse); Q00566(Rat)

\*AREX continuously optimizes our products. Webpage content may not reflect the latest updates. For inquiries, please contact [info@arexbio.com](mailto:info@arexbio.com) or your local distributor.

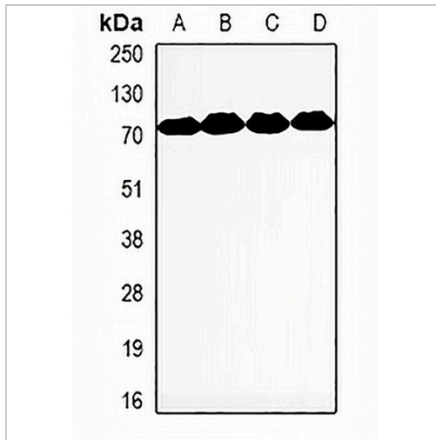
\*Clone Number, Reactivity, Source/Host and Clonality can be found in the product name and Key Features section above.

**DATASHEET**

**MeCP2 Rabbit Polyclonal Antibody**

CAT. NO. APA12780

**DATA**



Western blot analysis of MeCP2 expression in HT29 (A), Jurkat (B), mouse spleen (C), mouse lung (D) whole cell lysates. (Predicted band size: 52; 53 kD; Observed band size: 80 kD)

**STORAGE**

Store at 4°C short term. For long term storage, store at -20°C, avoiding freeze/thaw cycles.

**NOTE**

For Research Use Only. Not for diagnostic, therapeutics, prophylactic or in vivo use.