

**DATASHEET**

**PSMB4 Rabbit Polyclonal Antibody**

CAT. NO. APA12781

**KEY FEATURES**

Target	PSMB4	Source / Host	Rabbit
Reactivity	Human, Mouse, Rat	Clonality	Polyclonal
Applications	WB	Conjugation	Unconjugated
Form / Buffer	Liquid in 0.42% Potassium phosphate, 0.87% Sodium chloride, pH 7.3, 30% glycerol, and 0.01% sodium azide.		Storage at-20°C

**BACKGROUND**

Non-catalytic component of the 20S core proteasome complex involved in the proteolytic degradation of most intracellular proteins. This complex plays numerous essential roles within the cell by associating with different regulatory particles. Associated with two 19S regulatory particles, forms the 26S proteasome and thus participates in the ATP-dependent degradation of ubiquitinated proteins. The 26S proteasome plays a key role in the maintenance of protein homeostasis by removing misfolded or damaged proteins that could impair cellular functions, and by removing proteins whose functions are no longer required. Associated with the PA200 or PA28, the 20S proteasome mediates ubiquitin-independent protein degradation.

**APPLICATION**

To ensure optimal assay performance, AREX recommends conducting reagent titration tailored to each testing system for optimal detection results.

WB	1:500 - 1:1000
----	----------------

\*Results are sample-specific. Please refer to your local assay conditions and test parameters for reference.

**PRODUCT OVERVIEW**

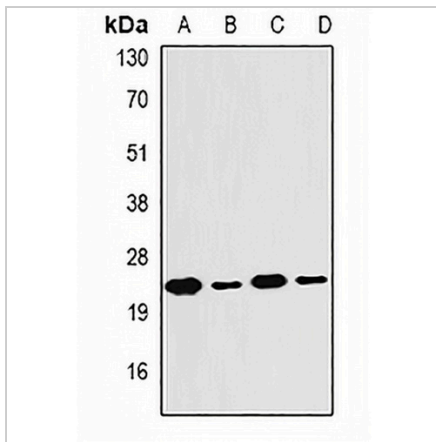
Description	Rabbit polyclonal antibody to PSMB4
Specificity	Recognizes endogenous levels of PSMB4 protein.
Antibody Type	Primary antibody
Immunogen	Recombinant fusion protein of human PSMB4
Purification	The antibody was purified by immunogen affinity chromatography.
Molecular Weight	Predicted: 29 kD; Observed: 22 kD
Form/Buffer	Liquid in 0.42% Potassium phosphate, 0.87% Sodium chloride, pH 7.3, 30% glycerol, and 0.01% sodium azide.
Alternative Names	PROS26; Proteasome subunit beta type-4; 26 kDa prosomal protein; HsBPROS26; PROS-26; Macropain beta chain; Multicatalytic endopeptidase complex beta chain; Proteasome beta chain; Proteasome chain 3; HsN3
Gene Symbol	PSMB4
Entrez Gene	5692(Human); 19172(Mouse); 58854(Rat)
SwissProt	P28070(Human); P99026(Mouse); P34067(Rat)

\*AREX continuously optimizes our products. Webpage content may not reflect the latest updates. For inquiries, please contact [info@arexbio.com](mailto:info@arexbio.com) or your local distributor.

\*Clone Number, Reactivity, Source/Host and Clonality can be found in the product name and Key Features section above.

**DATASHEET****PSMB4 Rabbit Polyclonal Antibody**

CAT. NO. APA12781

**DATA**

Western blot analysis of PSMB4 expression in MCF7 (A), SKOV3 (B), mouse thymus (C), mouse liver (D) whole cell lysates. (Predicted band size: 29 kD; Observed band size: 22 kD)

**STORAGE**

Store at 4°C short term. For long term storage, store at -20°C, avoiding freeze/thaw cycles.

**NOTE**

For Research Use Only. Not for diagnostic, therapeutics, prophylactic or in vivo use.