

DATASHEET

Citrate Synthase Rabbit Polyclonal Antibody

CAT. NO. APA12782

KEY FEATURES

Target	Citrate Synthase	Source / Host	Rabbit
Reactivity	Human, Mouse, Rat	Clonality	Polyclonal
Applications	WB, IF/ICC	Conjugation	Unconjugated
Form / Buffer	Liquid in 0.42% Potassium phosphate, 0.87% Sodium chloride, pH 7.3, 30% glycerol, and 0.01% sodium azide.		Storage at -20°C

BACKGROUND

Key enzyme of the Krebs tricarboxylic acid cycle which catalyzes the synthesis of citrate from acetyl coenzyme A and oxaloacetate.

APPLICATION

To ensure optimal assay performance, AREX recommends conducting reagent titration tailored to each testing system for optimal detection results.

WB	1:500 - 1:2000
IF/ICC	1:50 - 1:200

*Results are sample-specific. Please refer to your local assay conditions and test parameters for reference.

PRODUCT OVERVIEW

Description	Rabbit polyclonal antibody to Citrate Synthase
Specificity	Recognizes endogenous levels of Citrate Synthase protein.
Antibody Type	Primary antibody
Immunogen	Recombinant fusion protein of human Citrate Synthase
Purification	The antibody was purified by immunogen affinity chromatography.
Molecular Weight	Predicted: 51 kD; Observed: 45 kD
Form/Buffer	Liquid in 0.42% Potassium phosphate, 0.87% Sodium chloride, pH 7.3, 30% glycerol, and 0.01% sodium azide.
Alternative Names	Citrate synthase mitochondrial; Citrate (Si)-synthase
Gene Symbol	CS
Entrez Gene	1431(Human); 12974(Mouse); 170587(Rat)
SwissProt	O75390(Human); Q9CZU6(Mouse); Q8VHF5(Rat)

*AREX continuously optimizes our products. Webpage content may not reflect the latest updates. For inquiries, please contact info@arexbio.com or your local distributor.

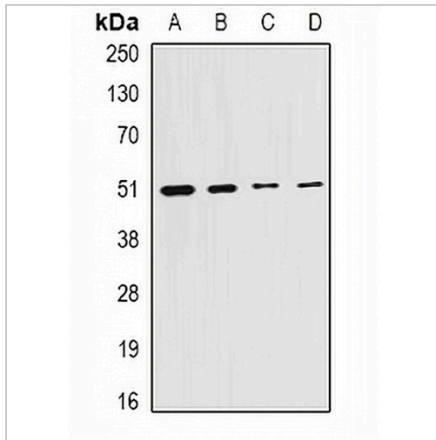
*Clone Number, Reactivity, Source/Host and Clonality can be found in the product name and Key Features section above.

DATASHEET

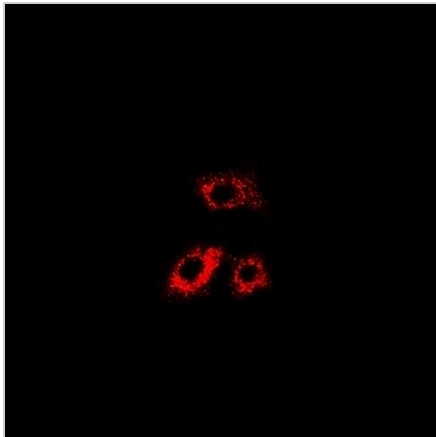
Citrate Synthase Rabbit Polyclonal Antibody

CAT. NO. APA12782

DATA



Western blot analysis of Citrate Synthase expression in HepG2 (A), MCF7 (B), mouse liver (C), rat testis (D) whole cell lysates. (Predicted band size: 51 kD; Observed band size: 45 kD)



Immunofluorescent analysis of Citrate Synthase staining in MCF7 cells. Formalin-fixed cells were permeabilized with 0.1% Triton X-100 in TBS for 5-10 minutes and blocked with 3% BSA-PBS for 30 minutes at room temperature. Cells were probed with the primary antibody in 3% BSA-PBS and incubated overnight at 4 °C in a humidified chamber. Cells were washed with PBST and incubated with a DyLight 594-conjugated secondary antibody (red) in PBS at room temperature in the dark.

STORAGE

Store at 4°C short term. For long term storage, store at -20°C, avoiding freeze/thaw cycles.

NOTE

For Research Use Only. Not for diagnostic, therapeutics, prophylactic or in vivo use.