

DATASHEET

Bestrophin Rabbit Polyclonal Antibody

CAT. NO. APA12788

KEY FEATURES

Target	Bestrophin	Source / Host	Rabbit
Reactivity	Human, Mouse, Rat	Clonality	Polyclonal
Applications	WB, IF/ICC	Conjugation	Unconjugated
Form / Buffer	Liquid in 0.42% Potassium phosphate, 0.87% Sodium chloride, pH 7.3, 30% glycerol, and 0.01% sodium azide.		Storage at -20°C

BACKGROUND

Ligand-gated anion channel that allows the movement of anions across cell membranes when activated by calcium (Ca²⁺). Allows the movement of chloride and hydrogencarbonate. Found in a partially open conformation leading to significantly smaller chloride movement. Upon F2R/PAR-1 activation, the sequestered calcium is released into the cytosol of astrocytes, leading to the (Ca²⁺)-dependent release of L-glutamate into the synaptic cleft that targets the neuronal postsynaptic GRIN2A/NMDAR receptor resulting in the synaptic plasticity regulation.

APPLICATION

To ensure optimal assay performance, AREX recommends conducting reagent titration tailored to each testing system for optimal detection results.

WB	1:500 - 1:1000
IF/ICC	1:50 - 1:200

*Results are sample-specific. Please refer to your local assay conditions and test parameters for reference.

PRODUCT OVERVIEW

Description	Rabbit polyclonal antibody to Bestrophin
Specificity	Recognizes endogenous levels of Bestrophin protein.
Antibody Type	Primary antibody
Immunogen	Recombinant fusion protein of human Bestrophin
Purification	The antibody was purified by immunogen affinity chromatography.
Molecular Weight	Predicted: 67 kD; Observed: 67 kD
Form/Buffer	Liquid in 0.42% Potassium phosphate, 0.87% Sodium chloride, pH 7.3, 30% glycerol, and 0.01% sodium azide.
Alternative Names	VMD2; Bestrophin-1; TU15B; Vitelliform macular dystrophy protein 2
Gene Symbol	BEST1
Entrez Gene	7439(Human); 24115(Mouse)
SwissProt	O76090(Human); O88870(Mouse)

*AREX continuously optimizes our products. Webpage content may not reflect the latest updates. For inquiries, please contact info@arexbio.com or your local distributor.

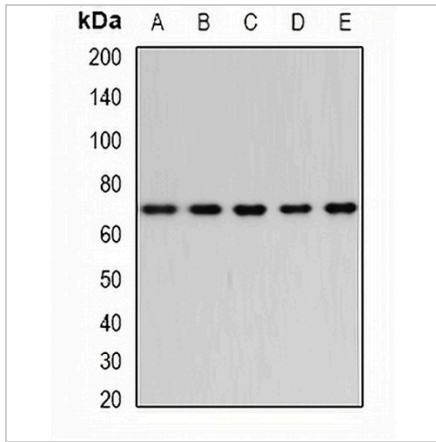
*Clone Number, Reactivity, Source/Host and Clonality can be found in the product name and Key Features section above.

DATASHEET

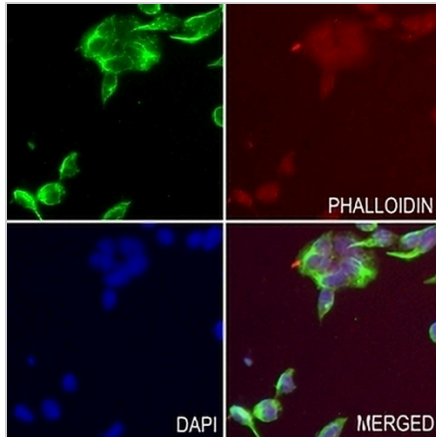
Bestrophin Rabbit Polyclonal Antibody

CAT. NO. APA12788

DATA



Western blot analysis of Bestrophin expression in THP1 (A), BT474 (B), HeLa (C), mouse heart (D), mouse lung (E) whole cell lysates. (Predicted band size: 67 kD; Observed band size: 67 kD)



Immunofluorescent analysis of Bestrophin staining in HEK293T cells. Formalin-fixed cells were permeabilized with 0.1% Triton X-100 in TBS for 5-10 minutes and blocked with 3% BSA-PBS for 30 minutes at room temperature. Cells were probed with the primary antibody in 3% BSA-PBS and incubated overnight at 4 °C in a humidified chamber. Cells were washed with PBST and incubated with a AREX® Fluor 488 -conjugated secondary antibody (green) in PBS at room temperature in the dark. Phalloidin - AREX® Fluor 594 was used to stain Actin filaments (red). DAPI was used to stain the cell nuclei (blue).

STORAGE

Store at 4°C short term. For long term storage, store at -20°C, avoiding freeze/thaw cycles.

NOTE

For Research Use Only. Not for diagnostic, therapeutics, prophylactic or in vivo use.