

DATASHEET

PCGF6 Rabbit Polyclonal Antibody

CAT. NO. APA12793

KEY FEATURES

Target	PCGF6	Source / Host	Rabbit
Reactivity	Human, Mouse	Clonality	Polyclonal
Applications	WB, IF/ICC	Conjugation	Unconjugated
Form / Buffer	Liquid in 0.42% Potassium phosphate, 0.87% Sodium chloride, pH 7.3, 30% glycerol, and 0.01% sodium azide.		Storage at -20°C

BACKGROUND

Transcriptional repressor . May modulate the levels of histone H3K4Me3 by activating KDM5D histone demethylase . Component of a Polycomb group (PcG) multiprotein PRC1-like complex, a complex class required to maintain the transcriptionally repressive state of many genes, including Hox genes, throughout development. PcG PRC1 complex acts via chromatin remodeling and modification of histones; it mediates monoubiquitination of histone H2A 'Lys-119', rendering chromatin heritably changed in its expressibility . Within the PRC1-like complex, regulates RNF2 ubiquitin ligase activity .

APPLICATION

To ensure optimal assay performance, AREX recommends conducting reagent titration tailored to each testing system for optimal detection results.

WB	1:500 - 1:2000
IF/ICC	1:50 - 1:100

*Results are sample-specific. Please refer to your local assay conditions and test parameters for reference.

PRODUCT OVERVIEW

Description	Rabbit polyclonal antibody to PCGF6
Specificity	Recognizes endogenous levels of PCGF6 protein.
Antibody Type	Primary antibody
Immunogen	Recombinant fusion protein of human PCGF6
Purification	The antibody was purified by immunogen affinity chromatography.
Molecular Weight	Predicted: 30; Observed: 50 kD
Form/Buffer	Liquid in 0.42% Potassium phosphate, 0.87% Sodium chloride, pH 7.3, 30% glycerol, and 0.01% sodium azide.
Alternative Names	MBLR; RNF134; Polycomb group RING finger protein 6; Mel18 and Bmi1-like RING finger; RING finger protein 134
Gene Symbol	PCGF6
Entrez Gene	84108(Human); 71041(Mouse)
SwissProt	Q9BYE7(Human); Q99NA9(Mouse)

*AREX continuously optimizes our products. Webpage content may not reflect the latest updates. For inquiries, please contact info@arexbio.com or your local distributor.

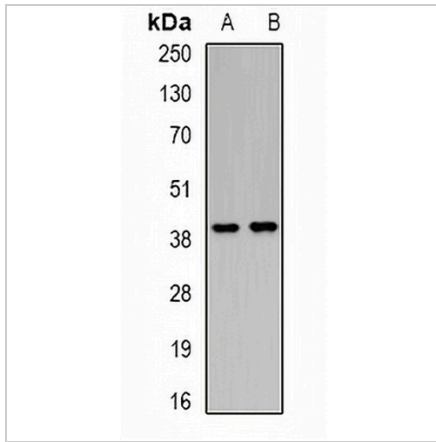
*Clone Number, Reactivity, Source/Host and Clonality can be found in the product name and Key Features section above.

DATASHEET

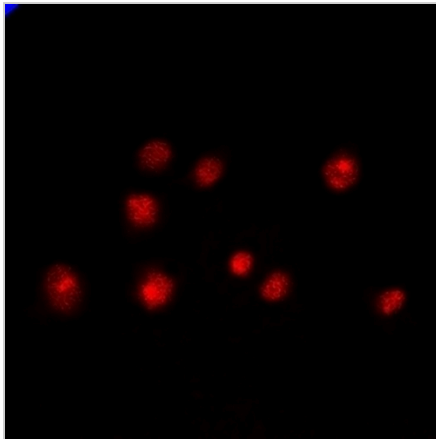
PCGF6 Rabbit Polyclonal Antibody

CAT. NO. APA12793

DATA



Western blot analysis of PCGF6 expression in MCF7 (A), mouse liver (B) whole cell lysates. (Predicted band size: 30; 39 kD; Observed band size: 50 kD)



Immunofluorescent analysis of PCGF6 staining in HeLa cells. Formalin-fixed cells were permeabilized with 0.1% Triton X-100 in TBS for 5-10 minutes and blocked with 3% BSA-PBS for 30 minutes at room temperature. Cells were probed with the primary antibody in 3% BSA-PBS and incubated overnight at 4 °C in a humidified chamber. Cells were washed with PBST and incubated with a DyLight 594-conjugated secondary antibody (red) in PBS at room temperature in the dark.

STORAGE

Store at 4°C short term. For long term storage, store at -20°C, avoiding freeze/thaw cycles.

NOTE

For Research Use Only. Not for diagnostic, therapeutics, prophylactic or in vivo use.