

DATASHEET

Dia 1 Rabbit Polyclonal Antibody

CAT. NO. APA12796

KEY FEATURES

Target	Dia 1	Source / Host	Rabbit
Reactivity	Human, Mouse	Clonality	Polyclonal
Applications	WB, IF/ICC	Conjugation	Unconjugated
Form / Buffer	Liquid in 0.42% Potassium phosphate, 0.87% Sodium chloride, pH 7.3, 30% glycerol, and 0.01% sodium azide.		Storage at -20°C

BACKGROUND

Actin nucleation and elongation factor required for the assembly of F-actin structures, such as actin cables and stress fibers . Binds to the barbed end of the actin filament and slows down actin polymerization and depolymerization . Required for cytokinesis, and transcriptional activation of the serum response factor . DFR proteins couple Rho and Src tyrosine kinase during signaling and the regulation of actin dynamics . Functions as a scaffold protein for MAPRE1 and APC to stabilize microtubules and promote cell migration . Has neurite outgrowth promoting activity. Acts in a Rho-dependent manner to recruit PFY1 to the membrane . In hear cells, it may play a role in the regulation of actin polymerization in hair cells .

APPLICATION

To ensure optimal assay performance, AREX recommends conducting reagent titration tailored to each testing system for optimal detection results.

WB	1:500 - 1:2000
IF/ICC	1:50 - 1:100

*Results are sample-specific. Please refer to your local assay conditions and test parameters for reference.

PRODUCT OVERVIEW

Description	Rabbit polyclonal antibody to Dia 1
Specificity	Recognizes endogenous levels of Dia 1 protein.
Antibody Type	Primary antibody
Immunogen	Recombinant fusion protein of human Dia 1
Purification	The antibody was purified by immunogen affinity chromatography.
Molecular Weight	Predicted: 141 kD; Observed: 150 kD
Form/Buffer	Liquid in 0.42% Potassium phosphate, 0.87% Sodium chloride, pH 7.3, 30% glycerol, and 0.01% sodium azide.
Alternative Names	DIAP1; Protein diaphanous homolog 1; Diaphanous-related formin-1; DRF1
Gene Symbol	DIAPH1
Entrez Gene	1729(Human); 13367(Mouse)
SwissProt	O60610(Human); O08808(Mouse)

*AREX continuously optimizes our products. Webpage content may not reflect the latest updates. For inquiries, please contact info@arexbio.com or your local distributor.

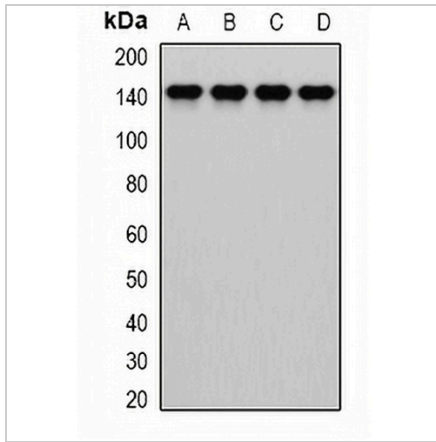
*Clone Number, Reactivity, Source/Host and Clonality can be found in the product name and Key Features section above.

DATASHEET

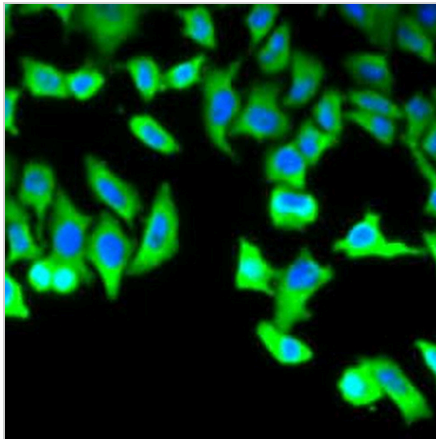
Dia 1 Rabbit Polyclonal Antibody

CAT. NO. APA12796

DATA



Western blot analysis of Dia 1 expression in MCF7 (A), HepG2 (B), mouse liver (C), mouse lung (D) whole cell lysates. (Predicted band size: 141 kD; Observed band size: 150 kD)



Immunofluorescent analysis of Dia 1 staining in U2OS cells. Formalin-fixed cells were permeabilized with 0.1% Triton X-100 in TBS for 5-10 minutes and blocked with 3% BSA-PBS for 30 minutes at room temperature. Cells were probed with the primary antibody in 3% BSA-PBS and incubated overnight at 4 °C in a humidified chamber. Cells were washed with PBST and incubated with a AREX® Fluor 488 -conjugated secondary antibody (green) in PBS at room temperature in the dark. DAPI was used to stain the cell nuclei (blue).

STORAGE

Store at 4°C short term. For long term storage, store at -20°C, avoiding freeze/thaw cycles.

NOTE

For Research Use Only. Not for diagnostic, therapeutics, prophylactic or in vivo use.