

DATASHEET

BBOX1 Rabbit Polyclonal Antibody

CAT. NO. APA12802

KEY FEATURES

Target	BBOX1	Source / Host	Rabbit
Reactivity	Human, Mouse, Rat	Clonality	Polyclonal
Applications	WB	Conjugation	Unconjugated
Form / Buffer	Liquid in 0.42% Potassium phosphate, 0.87% Sodium chloride, pH 7.3, 30% glycerol, and 0.01% sodium azide.		Storage at -20°C

BACKGROUND

Catalyzes the formation of L-carnitine from gamma-butyrobetaine.

APPLICATION

To ensure optimal assay performance, AREX recommends conducting reagent titration tailored to each testing system for optimal detection results.

WB	1:500 - 1:2000
----	----------------

*Results are sample-specific. Please refer to your local assay conditions and test parameters for reference.

PRODUCT OVERVIEW

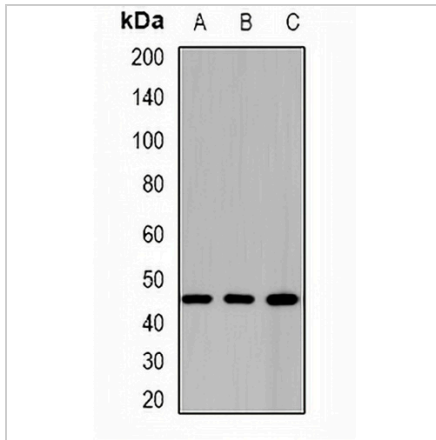
Description	Rabbit polyclonal antibody to BBOX1
Specificity	Recognizes endogenous levels of BBOX1 protein.
Antibody Type	Primary antibody
Immunogen	Recombinant fusion protein of human BBOX1
Purification	The antibody was purified by immunogen affinity chromatography.
Molecular Weight	Predicted: 44 kD; Observed: 45 kD
Form/Buffer	Liquid in 0.42% Potassium phosphate, 0.87% Sodium chloride, pH 7.3, 30% glycerol, and 0.01% sodium azide.
Alternative Names	BBH; BBOX; Gamma-butyrobetaine dioxygenase; Gamma-butyrobetaine hydroxylase; Gamma-BBH; Gamma-butyrobetaine,2-oxoglutarate dioxygenase
Gene Symbol	BBOX1
Entrez Gene	8424(Human); 170442(Mouse)
SwissProt	O75936(Human); Q924Y0(Mouse)

*AREX continuously optimizes our products. Webpage content may not reflect the latest updates. For inquiries, please contact info@arexbio.com or your local distributor.

*Clone Number, Reactivity, Source/Host and Clonality can be found in the product name and Key Features section above.

DATASHEET**BBOX1 Rabbit Polyclonal Antibody**

CAT. NO. APA12802

DATA

Western blot analysis of BBOX1 expression in MCF7 (A), mouse liver (B), mouse kidney (C) whole cell lysates. (Predicted band size: 44 kD; Observed band size: 45 kD)

STORAGE

Store at 4°C short term. For long term storage, store at -20°C, avoiding freeze/thaw cycles.

NOTE

For Research Use Only. Not for diagnostic, therapeutics, prophylactic or in vivo use.