

DATASHEET

RMDN3 Rabbit Polyclonal Antibody

CAT. NO. APA12805

KEY FEATURES

Target	RMDN3	Source / Host	Rabbit
Reactivity	Human, Mouse, Rat	Clonality	Polyclonal
Applications	WB, IHC	Conjugation	Unconjugated
Form / Buffer	Liquid in 0.42% Potassium phosphate, 0.87% Sodium chloride, pH 7.3, 30% glycerol, and 0.01% sodium azide.		Storage at-20°C

BACKGROUND

Involved in cellular calcium homeostasis regulation. May participate in differentiation and apoptosis of keratinocytes. Overexpression induces apoptosis.

APPLICATION

To ensure optimal assay performance, AREX recommends conducting reagent titration tailored to each testing system for optimal detection results.

WB	1:500 - 1:2000
IHC	1:50 - 1:200

*Results are sample-specific. Please refer to your local assay conditions and test parameters for reference.

PRODUCT OVERVIEW

Description	Rabbit polyclonal antibody to RMDN3
Specificity	Recognizes endogenous levels of RMDN3 protein.
Antibody Type	Primary antibody
Immunogen	Recombinant fusion protein of human RMDN3
Purification	The antibody was purified by immunogen affinity chromatography.
Molecular Weight	Predicted: 38; Observed: 60 kD
Form/Buffer	Liquid in 0.42% Potassium phosphate, 0.87% Sodium chloride, pH 7.3, 30% glycerol, and 0.01% sodium azide.
Alternative Names	FAM82A2; FAM82C; PTPIP51; Regulator of microtubule dynamics protein 3; RMD-3; hRMD-3; Cerebral protein 10; Protein FAM82A2; Protein FAM82C; Protein tyrosine phosphatase-interacting protein 51; TCPTP-interacting protein 51
Gene Symbol	RMDN3
Entrez Gene	55177(Human); 67809(Mouse)
SwissProt	Q96TC7(Human); Q3UJU9(Mouse)

*AREX continuously optimizes our products. Webpage content may not reflect the latest updates. For inquiries, please contact info@arexbio.com or your local distributor.

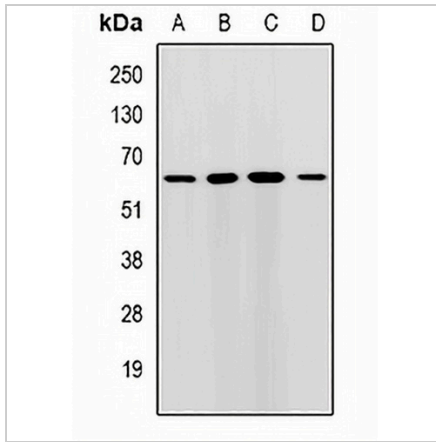
*Clone Number, Reactivity, Source/Host and Clonality can be found in the product name and Key Features section above.

DATASHEET

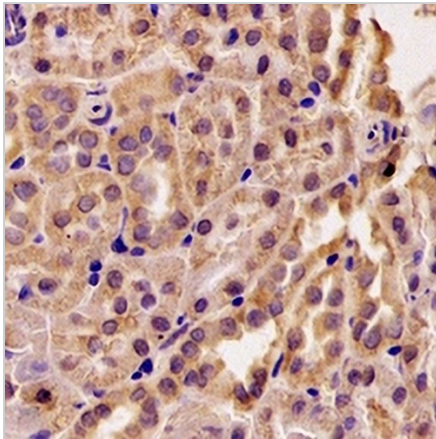
RMDN3 Rabbit Polyclonal Antibody

CAT. NO. APA12805

DATA



Western blot analysis of RMDN3 expression in HepG2 (A), MCF7 (B), mouse liver (C), mouse brain (D) whole cell lysates. (Predicted band size: 38; 52 kD; Observed band size: 60 kD)



Immunohistochemical analysis of RMDN3 staining in rat kidney formalin fixed paraffin embedded tissue section. The section was pre-treated using heat mediated antigen retrieval with sodium citrate buffer (pH 6.0). The section was then incubated with the antibody at room temperature and detected using an HRP conjugated compact polymer system. DAB was used as the chromogen. The section was then counterstained with haematoxylin and mounted with DPX.

STORAGE

Store at 4°C short term. For long term storage, store at -20°C, avoiding freeze/thaw cycles.

NOTE

For Research Use Only. Not for diagnostic, therapeutics, prophylactic or in vivo use.