

DATASHEET

Lsh Rabbit Polyclonal Antibody

CAT. NO. APA12808

KEY FEATURES

Target	Lsh	Source / Host	Rabbit
Reactivity	Human, Mouse, Rat	Clonality	Polyclonal
Applications	WB, IF/ICC, IP, ChIP	Conjugation	Unconjugated
Form / Buffer	Liquid in 0.42% Potassium phosphate, 0.87% Sodium chloride, pH 7.3, 30% glycerol, and 0.01% sodium azide.		Storage at -20°C

BACKGROUND

ATP-dependent chromatin remodeler that regulates chromatin accessibility, DNA methylation, and histone modifications. It facilitates de novo DNA methylation at repetitive sequences and promotes transcriptional silencing via recruitment of DNA methyltransferases (DNMTs) and histone deacetylases (HDACs), contributing to heterochromatin formation and repression of transposable elements and histone deacetylases (HDACs), contributing to heterochromatin formation and repression of transposable elements. Also involved in DNA repair by recruiting DNA damage response mediators to double-strand breaks in heterochromatin, promoting homologous recombination via RBBP8/CtIP-dependent end resection. During meiosis, it is recruited by PRDM9 to recombination hotspots, aiding chromatin opening.

APPLICATION

To ensure optimal assay performance, AREX recommends conducting reagent titration tailored to each testing system for optimal detection results.

WB	1:500 - 1:2000
IF/ICC	1:50 - 1:200
IP	1:50 - 1:200
ChIP	1:20 - 1:100

*Results are sample-specific. Please refer to your local assay conditions and test parameters for reference.

PRODUCT OVERVIEW

Description	Rabbit polyclonal antibody to Lsh
Specificity	Recognizes endogenous levels of Lsh protein.
Antibody Type	Primary antibody
Immunogen	Recombinant fusion protein of human Lsh
Purification	The antibody was purified by immunogen affinity chromatography.
Molecular Weight	Predicted: 14; Observed: 120 kD
Form/Buffer	Liquid in 0.42% Potassium phosphate, 0.87% Sodium chloride, pH 7.3, 30% glycerol, and 0.01% sodium azide.
Alternative Names	PASG; SMARCA6; Lymphoid-specific helicase; Proliferation-associated SNF2-like protein; SWI/SNF2-related matrix-associated actin-dependent regulator of chromatin subfamily A member 6
Gene Symbol	HELLS
Entrez Gene	3070(Human); 15201(Mouse)
SwissProt	Q9NRZ9(Human); Q60848(Mouse)

*AREX continuously optimizes our products. Webpage content may not reflect the latest updates. For inquiries, please contact info@arexbio.com or your local distributor.

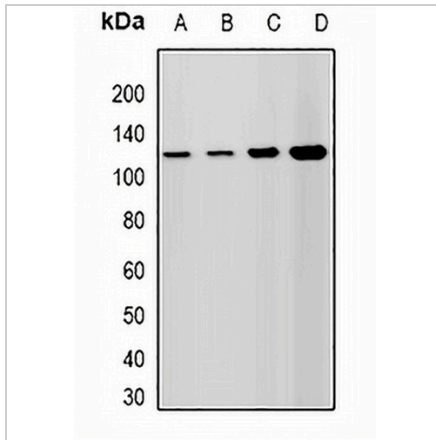
*Clone Number, Reactivity, Source/Host and Clonality can be found in the product name and Key Features section above.

DATASHEET

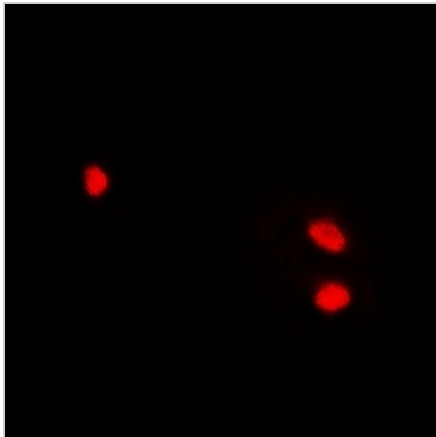
Lsh Rabbit Polyclonal Antibody

CAT. NO. APA12808

DATA



Western blot analysis of Lsh expression in A549 (A), HepG2 (B), mouse spleen (C), rat testis (D) whole cell lysates. (Predicted band size: 14; 36-39; 81-97 kD; Observed band size: 120 kD)



Immunofluorescent analysis of Lsh staining in A549 cells. Formalin-fixed cells were permeabilized with 0.1% Triton X-100 in TBS for 5-10 minutes and blocked with 3% BSA-PBS for 30 minutes at room temperature. Cells were probed with the primary antibody in 3% BSA-PBS and incubated overnight at 4 °C in a humidified chamber. Cells were washed with PBST and incubated with a DyLight 594-conjugated secondary antibody (red) in PBS at room temperature in the dark.

STORAGE

Store at 4°C short term. For long term storage, store at -20°C, avoiding freeze/thaw cycles.

NOTE

For Research Use Only. Not for diagnostic, therapeutics, prophylactic or in vivo use.