

DATASHEET

PRODH Rabbit Polyclonal Antibody

CAT. NO. APA12810

KEY FEATURES

Target	PRODH	Source / Host	Rabbit
Reactivity	Human, Mouse	Clonality	Polyclonal
Applications	WB	Conjugation	Unconjugated
Form / Buffer	Liquid in 0.42% Potassium phosphate, 0.87% Sodium chloride, pH 7.3, 30% glycerol, and 0.01% sodium azide.		Storage at -20°C

BACKGROUND

Converts proline to delta-1-pyrroline-5-carboxylate.

APPLICATION

To ensure optimal assay performance, AREX recommends conducting reagent titration tailored to each testing system for optimal detection results.

WB	1:500 - 1:1000
----	----------------

*Results are sample-specific. Please refer to your local assay conditions and test parameters for reference.

PRODUCT OVERVIEW

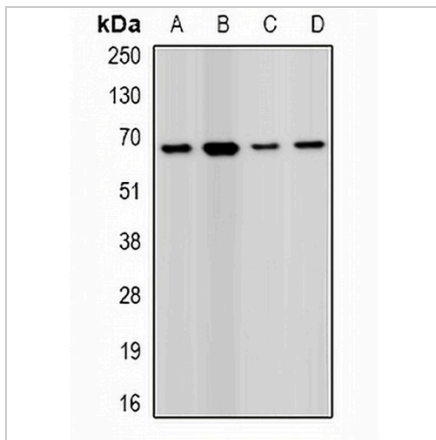
Description	Rabbit polyclonal antibody to PRODH
Specificity	Recognizes endogenous levels of PRODH protein.
Antibody Type	Primary antibody
Immunogen	Recombinant fusion protein of human PRODH
Purification	The antibody was purified by immunogen affinity chromatography.
Molecular Weight	Predicted: 56; Observed: 68 kD
Form/Buffer	Liquid in 0.42% Potassium phosphate, 0.87% Sodium chloride, pH 7.3, 30% glycerol, and 0.01% sodium azide.
Alternative Names	PIG6; POX2; Proline dehydrogenase 1 mitochondrial; Proline oxidase; Proline oxidase 2; p53-induced gene 6 protein
Gene Symbol	PRODH
Entrez Gene	5625(Human); 19125(Mouse)
SwissProt	O43272(Human); Q9WU79(Mouse)

*AREX continuously optimizes our products. Webpage content may not reflect the latest updates. For inquiries, please contact info@arexbio.com or your local distributor.

*Clone Number, Reactivity, Source/Host and Clonality can be found in the product name and Key Features section above.

DATASHEET**PRODH Rabbit Polyclonal Antibody**

CAT. NO. APA12810

DATA

Western blot analysis of PRODH expression in MCF7 (A), HEK293T (B), mouse liver (C), mouse kidney (D) whole cell lysates. (Predicted band size: 56; 59; 68 kD; Observed band size: 68 kD)

STORAGE

Store at 4°C short term. For long term storage, store at -20°C, avoiding freeze/thaw cycles.

NOTE

For Research Use Only. Not for diagnostic, therapeutics, prophylactic or in vivo use.