

DATASHEET

Twinfilin-2 Rabbit Polyclonal Antibody

CAT. NO. APA12812

KEY FEATURES

Target	Twinfilin-2	Source / Host	Rabbit
Reactivity	Human, Mouse, Rat	Clonality	Polyclonal
Applications	WB	Conjugation	Unconjugated
Form / Buffer	Liquid in 0.42% Potassium phosphate, 0.87% Sodium chloride, pH 7.3, 30% glycerol, and 0.01% sodium azide.		Storage at-20°C

BACKGROUND

Actin-binding protein involved in motile and morphological processes. Inhibits actin polymerization, likely by sequestering G-actin. By capping the barbed ends of filaments, it also regulates motility. Seems to play an important role in clathrin-mediated endocytosis and distribution of endocytic organelles. May play a role in regulating the mature length of the middle and short rows of stereocilia .

APPLICATION

To ensure optimal assay performance, AREX recommends conducting reagent titration tailored to each testing system for optimal detection results.

WB	1:500 - 1:2000
----	----------------

*Results are sample-specific. Please refer to your local assay conditions and test parameters for reference.

PRODUCT OVERVIEW

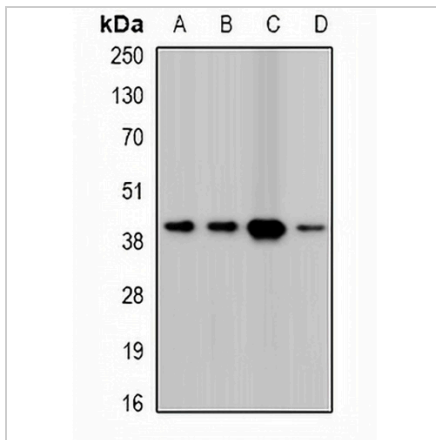
Description	Rabbit polyclonal antibody to Twinfilin-2
Specificity	Recognizes endogenous levels of Twinfilin-2 protein.
Antibody Type	Primary antibody
Immunogen	Recombinant fusion protein of human Twinfilin-2
Purification	The antibody was purified by immunogen affinity chromatography.
Molecular Weight	Predicted: 39 kD; Observed: 39 kD
Form/Buffer	Liquid in 0.42% Potassium phosphate, 0.87% Sodium chloride, pH 7.3, 30% glycerol, and 0.01% sodium azide.
Alternative Names	PTK9L; Twinfilin-2; A6-related protein; hA6RP; Protein tyrosine kinase 9-like; Twinfilin-1-like protein
Gene Symbol	TWF2
Entrez Gene	11344(Human); 23999(Mouse)
SwissProt	Q6IBS0(Human); Q9Z0P5(Mouse)

*AREX continuously optimizes our products. Webpage content may not reflect the latest updates. For inquiries, please contact info@arexbio.com or your local distributor.

*Clone Number, Reactivity, Source/Host and Clonality can be found in the product name and Key Features section above.

DATASHEET**Twinfilin-2 Rabbit Polyclonal Antibody**

CAT. NO. APA12812

DATA

Western blot analysis of Twinfilin-2 expression in HepG2 (A), A431 (B), mouse heart (C), mouse spleen (D) whole cell lysates. (Predicted band size: 39 kD; Observed band size: 39 kD)

STORAGE

Store at 4°C short term. For long term storage, store at -20°C, avoiding freeze/thaw cycles.

NOTE

For Research Use Only. Not for diagnostic, therapeutics, prophylactic or in vivo use.