

DATASHEET

PICOT Rabbit Polyclonal Antibody

CAT. NO. APA12816

KEY FEATURES

Target	PICOT	Source / Host	Rabbit
Reactivity	Human, Mouse	Clonality	Polyclonal
Applications	WB, IHC	Conjugation	Unconjugated
Form / Buffer	Liquid in 0.42% Potassium phosphate, 0.87% Sodium chloride, pH 7.3, 30% glycerol, and 0.01% sodium azide.		Storage at -20°C

BACKGROUND

Together with BOLA2, acts as a cytosolic iron-sulfur (Fe-S) cluster assembly factor that facilitates [2Fe-2S] cluster insertion into a subset of cytosolic proteins cluster assembly factor that facilitates [2Fe-2S] cluster insertion into a subset of cytosolic proteins . Acts as a critical negative regulator of cardiac hypertrophy and a positive inotropic regulator . Required for hemoglobin maturation . Does not possess any thioredoxin activity since it lacks the conserved motif that is essential for catalytic activity.

APPLICATION

To ensure optimal assay performance, AREX recommends conducting reagent titration tailored to each testing system for optimal detection results.

WB	1:500 - 1:2000
IHC	1:50 - 1:200

*Results are sample-specific. Please refer to your local assay conditions and test parameters for reference.

PRODUCT OVERVIEW

Description	Rabbit polyclonal antibody to PICOT
Specificity	Recognizes endogenous levels of PICOT protein.
Antibody Type	Primary antibody
Immunogen	Recombinant fusion protein of human PICOT
Purification	The antibody was purified by immunogen affinity chromatography.
Molecular Weight	Predicted: 37 kD; Observed: 37 kD
Form/Buffer	Liquid in 0.42% Potassium phosphate, 0.87% Sodium chloride, pH 7.3, 30% glycerol, and 0.01% sodium azide.
Alternative Names	PICOT; TXNL2; Glutaredoxin-3; PKC-interacting cousin of thioredoxin; PICOT; PKC-theta-interacting protein; PKCq-interacting protein; Thioredoxin-like protein 2
Gene Symbol	GLRX3
Entrez Gene	10539(Human); 30926(Mouse)
SwissProt	O76003(Human); Q9CQM9(Mouse)

*AREX continuously optimizes our products. Webpage content may not reflect the latest updates. For inquiries, please contact info@arexbio.com or your local distributor.

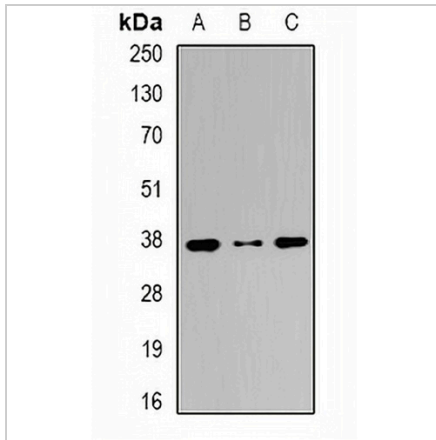
*Clone Number, Reactivity, Source/Host and Clonality can be found in the product name and Key Features section above.

DATASHEET

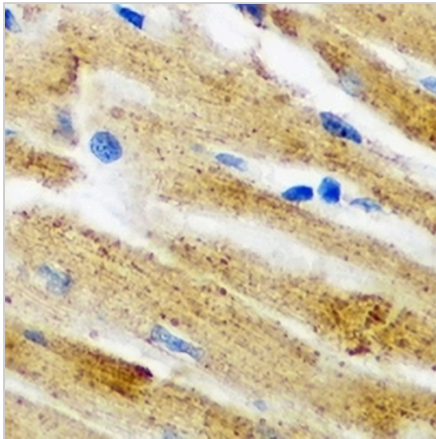
PICOT Rabbit Polyclonal Antibody

CAT. NO. APA12816

DATA



Western blot analysis of PICOT expression in MCF7 (A), A431 (B), HeLa (C) whole cell lysates. (Predicted band size: 37 kD; Observed band size: 37 kD)



Immunohistochemical analysis of PICOT staining in mouse heart formalin fixed paraffin embedded tissue section. The section was pre-treated using heat mediated antigen retrieval with sodium citrate buffer (pH 6.0). The section was then incubated with the antibody at room temperature and detected using an HRP conjugated compact polymer system. DAB was used as the chromogen. The section was then counterstained with haematoxylin and mounted with DPX.

STORAGE

Store at 4°C short term. For long term storage, store at -20°C, avoiding freeze/thaw cycles.

NOTE

For Research Use Only. Not for diagnostic, therapeutics, prophylactic or in vivo use.