

DATASHEET

APEH Rabbit Polyclonal Antibody

CAT. NO. APA12817

KEY FEATURES

Target	APEH	Source / Host	Rabbit
Reactivity	Human, Mouse, Rat	Clonality	Polyclonal
Applications	WB, IP	Conjugation	Unconjugated
Form / Buffer	Liquid in 0.42% Potassium phosphate, 0.87% Sodium chloride, pH 7.3, 30% glycerol, and 0.01% sodium azide.		Storage at -20°C

BACKGROUND

Aminopeptidase involved in the degradation of N(alpha)-acylated peptides. Displays exopeptidase activity toward N-formyl and N-acetyl peptides with a preference for dipeptide substrates. Catalyzes the hydrolysis of the N-terminal peptide bond of an N-acetylated peptide to generate an N-acetylated amino acid and a peptide with a free N-terminus -acylated peptides. Displays exopeptidase activity toward N-formyl and N-acetyl peptides with a preference for dipeptide substrates. Catalyzes the hydrolysis of the N-terminal peptide bond of an N-acetylated peptide to generate an N-acetylated amino acid and a peptide with a free N-terminus. It preferentially cleaves off Ac-Ala, Ac-Met and Ac-Ser.

APPLICATION

To ensure optimal assay performance, AREX recommends conducting reagent titration tailored to each testing system for optimal detection results.

WB	1:500 - 1:1000
IP	1:10 - 1:50

*Results are sample-specific. Please refer to your local assay conditions and test parameters for reference.

PRODUCT OVERVIEW

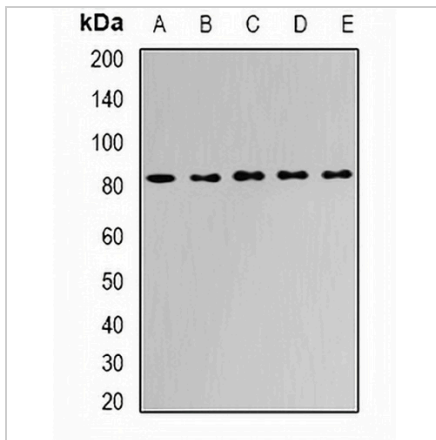
Description	Rabbit polyclonal antibody to APEH
Specificity	Recognizes endogenous levels of APEH protein.
Antibody Type	Primary antibody
Immunogen	Recombinant fusion protein of human APEH
Purification	The antibody was purified by immunogen affinity chromatography.
Molecular Weight	Predicted: 81 kD; Observed: 81 kD
Form/Buffer	Liquid in 0.42% Potassium phosphate, 0.87% Sodium chloride, pH 7.3, 30% glycerol, and 0.01% sodium azide.
Alternative Names	D3F15S2; D3S48E; DNF15S2; Acylamino-acid-releasing enzyme; AARE; Acyl-peptide hydrolase; APH; Acylaminoacyl-peptidase; Oxidized protein hydrolase; OPH
Gene Symbol	APEH
Entrez Gene	327(Human); 24206(Rat)
SwissProt	P13798(Human); P13676(Rat)

*AREX continuously optimizes our products. Webpage content may not reflect the latest updates. For inquiries, please contact info@arexbio.com or your local distributor.

*Clone Number, Reactivity, Source/Host and Clonality can be found in the product name and Key Features section above.

DATASHEET**APEH Rabbit Polyclonal Antibody**

CAT. NO. APA12817

DATA

Western blot analysis of APEH expression in Jurkat (A), HepG2 (B), mouse liver (C), mouse kidney (D), rat bone marrow (E) whole cell lysates. (Predicted band size: 81 kD; Observed band size: 81 kD)

STORAGE

Store at 4°C short term. For long term storage, store at -20°C, avoiding freeze/thaw cycles.

NOTE

For Research Use Only. Not for diagnostic, therapeutics, prophylactic or in vivo use.