

## DATASHEET

# BAF155 Rabbit Polyclonal Antibody

CAT. NO. APA12822

### KEY FEATURES

|               |   |               |                     |
|---------------|---|---------------|---------------------|
| Target        | BAF155  | Source / Host | Rabbit              |
| Reactivity    | Human, Rat  | Clonality     | Polyclonal          |
| Applications  | WB, IHC, IP, ChIP   | Conjugation   | Unconjugated        |
| Form / Buffer | Liquid in 0.42% Potassium phosphate, 0.87% Sodium chloride, pH 7.3, 30% glycerol, and 0.01% sodium azide. |               | Storage<br>at -20°C |

### BACKGROUND

Involved in transcriptional activation and repression of select genes by chromatin remodeling (alteration of DNA-nucleosome topology). Component of SWI/SNF chromatin remodeling complexes that carry out key enzymatic activities, changing chromatin structure by altering DNA-histone contacts within a nucleosome in an ATP-dependent manner. May stimulate the ATPase activity of the catalytic subunit of the complex. Component of SWI/SNF chromatin remodeling complexes that carry out key enzymatic activities, changing chromatin structure by altering DNA-histone contacts within a nucleosome in an ATP-dependent manner. May stimulate the ATPase activity of the catalytic subunit of the complex.

### APPLICATION

To ensure optimal assay performance, AREX recommends conducting reagent titration tailored to each testing system for optimal detection results.

|      |                |
|------|----------------|
| WB   | 1:500 - 1:2000 |
| IHC  | 1:50 - 1:200   |
| IP   | 1:50 - 1:200   |
| ChIP | 1:20 - 1:100   |

\*Results are sample-specific. Please refer to your local assay conditions and test parameters for reference.

### PRODUCT OVERVIEW

|                   |   |
|-------------------|---|
| Description       | Rabbit polyclonal antibody to BAF155  |
| Specificity       | Recognizes endogenous levels of BAF155 protein.   |
| Antibody Type     | Primary antibody  |
| Immunogen         | Recombinant fusion protein of human BAF155  |
| Purification      | The antibody was purified by immunogen affinity chromatography.   |
| Molecular Weight  | Predicted: 122 kD; Observed: 155 kD   |
| Form/Buffer       | Liquid in 0.42% Potassium phosphate, 0.87% Sodium chloride, pH 7.3, 30% glycerol, and 0.01% sodium azide.   |
| Alternative Names | BAF155; SWI/SNF complex subunit SMARCC1; BRG1-associated factor 155; BAF155; SWI/SNF complex 155 kDa subunit; SWI/SNF-related matrix-associated actin-dependent regulator of chromatin subfamily C member 1 |
| Gene Symbol       | SMARCC1   |
| Entrez Gene       | 6599(Human)   |
| SwissProt         | Q92922(Human)   |

\*AREX continuously optimizes our products. Webpage content may not reflect the latest updates. For inquiries, please contact [info@arexbio.com](mailto:info@arexbio.com) or your local distributor.

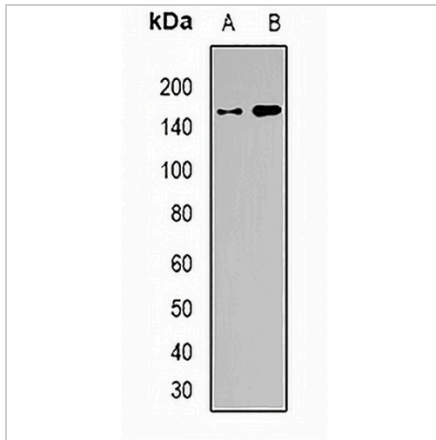
\*Clone Number, Reactivity, Source/Host and Clonality can be found in the product name and Key Features section above.

**DATASHEET**

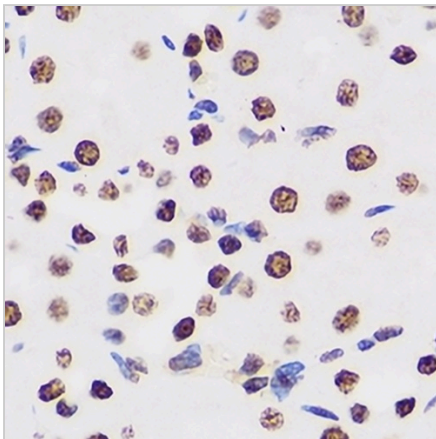
**BAF155 Rabbit Polyclonal Antibody**

CAT. NO. APA12822

**DATA**



Western blot analysis of BAF155 expression in SW620 (A), HEK293T (B) whole cell lysates. (Predicted band size: 122 kD; Observed band size: 155 kD)



Immunohistochemical analysis of BAF155 staining in human kidney formalin fixed paraffin embedded tissue section. The section was pre-treated using heat mediated antigen retrieval with sodium citrate buffer (pH 6.0). The section was then incubated with the antibody at room temperature and detected using an HRP conjugated compact polymer system. DAB was used as the chromogen. The section was then counterstained with haematoxylin and mounted with DPX.

**STORAGE**

Store at 4°C short term. For long term storage, store at -20°C, avoiding freeze/thaw cycles.

**NOTE**

For Research Use Only. Not for diagnostic, therapeutics, prophylactic or in vivo use.