

**DATASHEET**

**BORIS Rabbit Polyclonal Antibody**

CAT. NO. APA12824

**KEY FEATURES**

Target	BORIS	Source / Host	Rabbit
Reactivity	Human, Mouse, Rat	Clonality	Polyclonal
Applications	WB	Conjugation	Unconjugated
Form / Buffer	Liquid in 0.42% Potassium phosphate, 0.87% Sodium chloride, pH 7.3, 30% glycerol, and 0.01% sodium azide.		Storage at -20°C

**BACKGROUND**

Testis-specific DNA binding protein responsible for insulator function, nuclear architecture and transcriptional control, which probably acts by recruiting epigenetic chromatin modifiers. Plays a key role in gene imprinting in male germline, by participating in the establishment of differential methylation at the IGF2/H19 imprinted control region (ICR). Directly binds the unmethylated H19 ICR and recruits the PRMT7 methyltransferase, leading to methylate histone H4 'Arg-3' to form H4R3sme2. This probably leads to recruit de novo DNA methyltransferases at these sites. Seems to act as tumor suppressor. In association with DNMT1 and DNMT3B, involved in activation of BAG1 gene expression by binding to its promoter.

**APPLICATION**

To ensure optimal assay performance, AREX recommends conducting reagent titration tailored to each testing system for optimal detection results.

WB	1:500 - 1:1000
----	----------------

\*Results are sample-specific. Please refer to your local assay conditions and test parameters for reference.

**PRODUCT OVERVIEW**

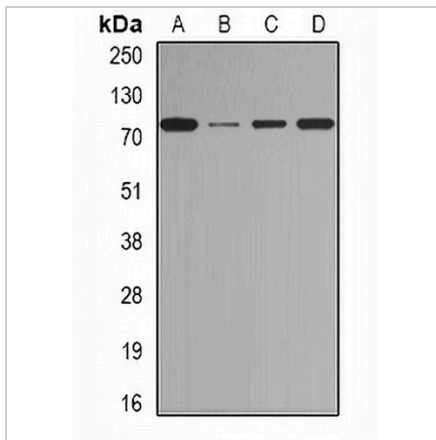
Description	Rabbit polyclonal antibody to BORIS
Specificity	Recognizes endogenous levels of BORIS protein.
Antibody Type	Primary antibody
Immunogen	Recombinant fusion protein of human BORIS
Purification	The antibody was purified by immunogen affinity chromatography.
Molecular Weight	Predicted: 35; Observed: 83 kD
Form/Buffer	Liquid in 0.42% Potassium phosphate, 0.87% Sodium chloride, pH 7.3, 30% glycerol, and 0.01% sodium azide.
Alternative Names	BORIS; Transcriptional repressor CTCFL; Brother of the regulator of imprinted sites; CCCTC-binding factor; CTCF paralog; CTCF-like protein; Cancer/testis antigen 27; CT27; Zinc finger protein CTCF-T
Gene Symbol	CTCFL
Entrez Gene	140690(Human); 664799(Mouse)
SwissProt	Q8NI51(Human); A2APF3(Mouse)

\*AREX continuously optimizes our products. Webpage content may not reflect the latest updates. For inquiries, please contact [info@arexbio.com](mailto:info@arexbio.com) or your local distributor.

\*Clone Number, Reactivity, Source/Host and Clonality can be found in the product name and Key Features section above.

**DATASHEET****BORIS Rabbit Polyclonal Antibody**

CAT. NO. APA12824

**DATA**

Western blot analysis of BORIS expression in Jurkat (A), HeLa (B), mouse heart (C), rat testis (D) whole cell lysates. (Predicted band size: 35; 46-80 kD; Observed band size: 83 kD)

**STORAGE**

Store at 4°C short term. For long term storage, store at -20°C, avoiding freeze/thaw cycles.

**NOTE**

For Research Use Only. Not for diagnostic, therapeutics, prophylactic or in vivo use.