

DATASHEET

Cytochrome P450 2C9 Rabbit Polyclonal Antibody

CAT. NO. APA12828

KEY FEATURES

Target	Cytochrome P450 2C9	Source / Host	Rabbit
Reactivity	Human	Clonality	Polyclonal
Applications	WB	Conjugation	Unconjugated
Form / Buffer	Liquid in 0.42% Potassium phosphate, 0.87% Sodium chloride, pH 7.3, 30% glycerol, and 0.01% sodium azide.		Storage at -20°C

BACKGROUND

A cytochrome P450 monooxygenase involved in the metabolism of various endogenous substrates, including fatty acids and steroids. Mechanistically, uses molecular oxygen inserting one oxygen atom into a substrate, and reducing the second into a water molecule, with two electrons provided by NADPH via cytochrome P450 reductase (NADPH--hemoprotein reductase). Catalyzes the epoxidation of double bonds of polyunsaturated fatty acids (PUFA). Catalyzes the hydroxylation of carbon-hydrogen bonds. Metabolizes cholesterol toward 25-hydroxycholesterol, a physiological regulator of cellular cholesterol homeostasis. Exhibits low catalytic activity for the formation of catechol estrogens from 17beta-estradiol (E2) and estrone (E1), namely 2-hydroxy E1 and E2.

APPLICATION

To ensure optimal assay performance, AREX recommends conducting reagent titration tailored to each testing system for optimal detection results.

WB	1:500 - 1:1000
----	----------------

*Results are sample-specific. Please refer to your local assay conditions and test parameters for reference.

PRODUCT OVERVIEW

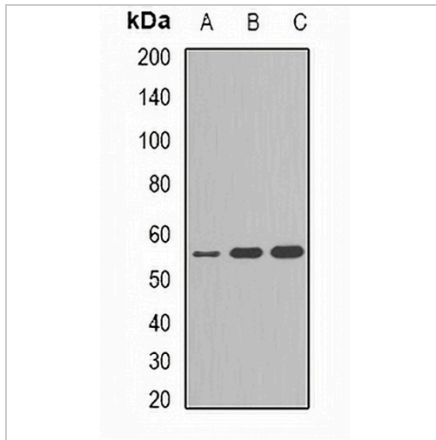
Description	Rabbit polyclonal antibody to Cytochrome P450 2C9
Specificity	Recognizes endogenous levels of Cytochrome P450 2C9 protein.
Antibody Type	Primary antibody
Immunogen	Recombinant fusion protein of human Cytochrome P450 2C9
Purification	The antibody was purified by immunogen affinity chromatography.
Molecular Weight	Predicted: 18; Observed: 55 kD
Form/Buffer	Liquid in 0.42% Potassium phosphate, 0.87% Sodium chloride, pH 7.3, 30% glycerol, and 0.01% sodium azide.
Alternative Names	CYP2C10; Cytochrome P450 2C9; (R)-limonene 6-monooxygenase; (S)-limonene 6-monooxygenase; (S)-limonene 7-monooxygenase; CYP11C9; Cytochrome P-450MP; Cytochrome P450 MP-4; Cytochrome P450 MP-8; Cytochrome P450 PB-1; S-mephenytoin 4-hydroxylase
Gene Symbol	CYP2C9
Entrez Gene	1559(Human)
SwissProt	P11712(Human)

*AREX continuously optimizes our products. Webpage content may not reflect the latest updates. For inquiries, please contact info@arexbio.com or your local distributor.

*Clone Number, Reactivity, Source/Host and Clonality can be found in the product name and Key Features section above.

DATASHEET**Cytochrome P450 2C9 Rabbit Polyclonal Antibody**

CAT. NO. APA12828

DATA

Western blot analysis of Cytochrome P450 2C9 expression in A549 (A), MCF7 (B), HepG2 (C) whole cell lysates. (Predicted band size: 18; 55 kD; Observed band size: 55 kD)

STORAGE

Store at 4°C short term. For long term storage, store at -20°C, avoiding freeze/thaw cycles.

NOTE

For Research Use Only. Not for diagnostic, therapeutics, prophylactic or in vivo use.