

DATASHEET

CBX4 Rabbit Polyclonal Antibody

CAT. NO. APA12830

KEY FEATURES

Target	CBX4	Source / Host	Rabbit
Reactivity	Human, Mouse	Clonality	Polyclonal
Applications	WB, IF/ICC	Conjugation	Unconjugated
Form / Buffer	Liquid in 0.42% Potassium phosphate, 0.87% Sodium chloride, pH 7.3, 30% glycerol, and 0.01% sodium azide.		Storage at -20°C

BACKGROUND

E3 SUMO-protein ligase that catalyzes sumoylation of target proteins by promoting the transfer of SUMO from the E2 enzyme to the substrate . Also acts as a histone reader, which specifically recognizes and binds histone H3 trimethylated at 'Lys-9' and 'Lys-27' (H3K9me3 and H3K27me3, respectively) via its chromo domain . Catalyzes sumoylation of HNRNPK, a p53/TP53 transcriptional coactivator, hence indirectly regulates p53/TP53 transcriptional activation resulting in p21/CDKN1A expression . Acts as a regulator of brown adipocyte differentiation by mediating sumoylation of PRDM16, thereby preventing PRDM16 ubiquitination and degradation . Monosumoylates ZNF131 .

APPLICATION

To ensure optimal assay performance, AREX recommends conducting reagent titration tailored to each testing system for optimal detection results.

WB	1:500 - 1:2000
IF/ICC	1:20 - 1:100

*Results are sample-specific. Please refer to your local assay conditions and test parameters for reference.

PRODUCT OVERVIEW

Description	Rabbit polyclonal antibody to CBX4
Specificity	Recognizes endogenous levels of CBX4 protein.
Antibody Type	Primary antibody
Immunogen	Recombinant fusion protein of human CBX4
Purification	The antibody was purified by immunogen affinity chromatography.
Molecular Weight	Predicted: 61 kD; Observed: 61 kD
Form/Buffer	Liquid in 0.42% Potassium phosphate, 0.87% Sodium chloride, pH 7.3, 30% glycerol, and 0.01% sodium azide.
Alternative Names	E3 SUMO-protein ligase CBX4; Chromobox protein homolog 4; Polycomb 2 homolog; Pc2; hPc2
Gene Symbol	CBX4
Entrez Gene	8535(Human); 12418(Mouse)
SwissProt	O00257(Human); O55187(Mouse)

*AREX continuously optimizes our products. Webpage content may not reflect the latest updates. For inquiries, please contact info@arexbio.com or your local distributor.

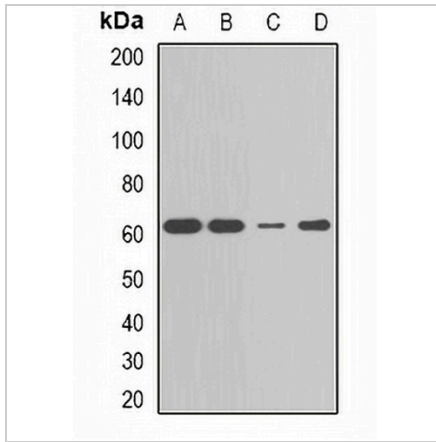
*Clone Number, Reactivity, Source/Host and Clonality can be found in the product name and Key Features section above.

DATASHEET

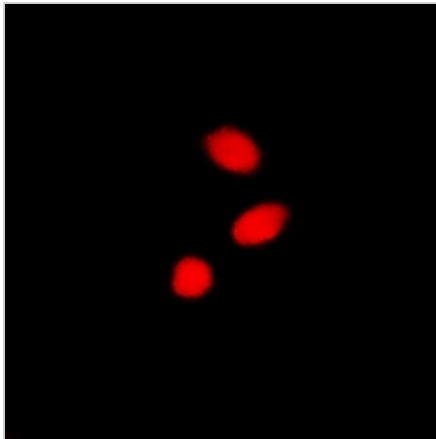
CBX4 Rabbit Polyclonal Antibody

CAT. NO. APA12830

DATA



Western blot analysis of CBX4 expression in MCF7 (A), HepG2 (B), Jurkat (C), mouse liver (D) whole cell lysates. (Predicted band size: 61 kD; Observed band size: 61 kD)



Immunofluorescent analysis of CBX4 staining in A549 cells. Formalin-fixed cells were permeabilized with 0.1% Triton X-100 in TBS for 5-10 minutes and blocked with 3% BSA-PBS for 30 minutes at room temperature. Cells were probed with the primary antibody in 3% BSA-PBS and incubated overnight at 4 °C in a humidified chamber. Cells were washed with PBST and incubated with a DyLight 594-conjugated secondary antibody (red) in PBS at room temperature in the dark.

STORAGE

Store at 4°C short term. For long term storage, store at -20°C, avoiding freeze/thaw cycles.

NOTE

For Research Use Only. Not for diagnostic, therapeutics, prophylactic or in vivo use.