

DATASHEET
PDC-E2 Rabbit Polyclonal Antibody
CAT. NO. APA12844
KEY FEATURES

Target	PDC-E2	Source / Host	Rabbit
Reactivity	Human, Mouse, Rat	Clonality	Polyclonal
Applications	WB, IF/ICC	Conjugation	Unconjugated
Form / Buffer	Liquid in 0.42% Potassium phosphate, 0.87% Sodium chloride, pH 7.3, 30% glycerol, and 0.01% sodium azide.		Storage at -20°C

BACKGROUND

The pyruvate dehydrogenase (PDH) complex, catalyzes the overall conversion of pyruvate to acetyl-CoA and CO₂, and thereby links cytoplasmic glycolysis and the mitochondrial tricarboxylic acid (TCA) cycle (Probable). It contains multiple copies of three enzymatic components: pyruvate dehydrogenase (E1), dihydrolipoamide acetyltransferase (E2) and dihydrolipoamide dehydrogenase (E3); (Probable). Within this complex, the catalytic function of this enzyme is to accept, and to transfer to coenzyme A, acetyl groups from acetyl-lipoyl moiety generated by the pyruvate dehydrogenase, leading to acetyl-CoA formation (Probable).

APPLICATION

To ensure optimal assay performance, AREX recommends conducting reagent titration tailored to each testing system for optimal detection results.

WB	1:500 - 1:2000
IF/ICC	1:10 - 1:100

*Results are sample-specific. Please refer to your local assay conditions and test parameters for reference.

PRODUCT OVERVIEW

Description	Rabbit polyclonal antibody to PDC-E2
Specificity	Recognizes endogenous levels of PDC-E2 protein.
Antibody Type	Primary antibody
Immunogen	Recombinant fusion protein of human PDC-E2
Purification	The antibody was purified by immunogen affinity chromatography.
Molecular Weight	Predicted: 68 kD; Observed: 69 kD
Form/Buffer	Liquid in 0.42% Potassium phosphate, 0.87% Sodium chloride, pH 7.3, 30% glycerol, and 0.01% sodium azide.
Alternative Names	DLTA; Dihydrolipoyllysine-residue acetyltransferase component of pyruvate dehydrogenase complex mitochondrial; 70 kDa mitochondrial autoantigen of primary biliary cirrhosis; PBC; Dihydrolipoamide acetyltransferase component of pyruvate dehydrogenase complex; M2 antigen complex 70 kDa subunit; Pyruvate dehydrogenase complex component E2; PDC-E2; PDCE2
Gene Symbol	DLAT
Entrez Gene	1737(Human); 235339(Mouse); 81654(Rat)
SwissProt	P10515(Human); Q8BMF4(Mouse); P08461(Rat)

*AREX continuously optimizes our products. Webpage content may not reflect the latest updates. For inquiries, please contact info@arexbio.com or your local distributor.

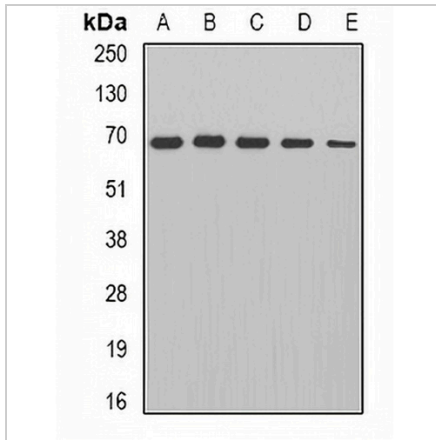
*Clone Number, Reactivity, Source/Host and Clonality can be found in the product name and Key Features section above.

DATASHEET

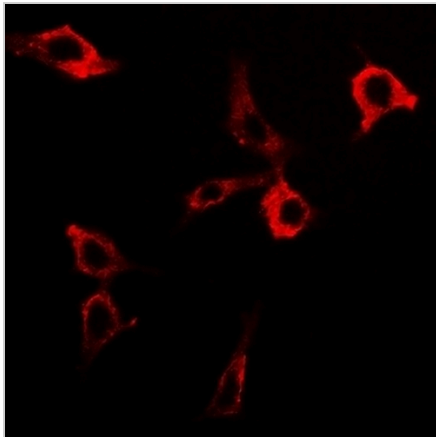
PDC-E2 Rabbit Polyclonal Antibody

CAT. NO. APA12844

DATA



Western blot analysis of PDC-E2 expression in HepG2 (A), Jurkat (B), mouse heart (C), rat brain (D), rat kidney (E) whole cell lysates. (Predicted band size: 68 kD; Observed band size: 69 kD)



Immunofluorescent analysis of PDC-E2 staining in HeLa cells. Formalin-fixed cells were permeabilized with 0.1% Triton X-100 in TBS for 5-10 minutes and blocked with 3% BSA-PBS for 30 minutes at room temperature. Cells were probed with the primary antibody in 3% BSA-PBS and incubated overnight at 4 °C in a humidified chamber. Cells were washed with PBST and incubated with a DyLight 594-conjugated secondary antibody (red) in PBS at room temperature in the dark.

STORAGE

Store at 4°C short term. For long term storage, store at -20°C, avoiding freeze/thaw cycles.

NOTE

For Research Use Only. Not for diagnostic, therapeutics, prophylactic or in vivo use.