

**DATASHEET**

**GALT Rabbit Polyclonal Antibody**

CAT. NO. APA12845

**KEY FEATURES**

Target	GALT	Source / Host	Rabbit
Reactivity	Human, Mouse, Rat	Clonality	Polyclonal
Applications	WB	Conjugation	Unconjugated
Form / Buffer	Liquid in 0.42% Potassium phosphate, 0.87% Sodium chloride, pH 7.3, 30% glycerol, and 0.01% sodium azide.		Storage at -20°C

**BACKGROUND**

Plays an important role in galactose metabolism.

**APPLICATION**

To ensure optimal assay performance, AREX recommends conducting reagent titration tailored to each testing system for optimal detection results.

WB	1:500 - 1:1000
----	----------------

\*Results are sample-specific. Please refer to your local assay conditions and test parameters for reference.

**PRODUCT OVERVIEW**

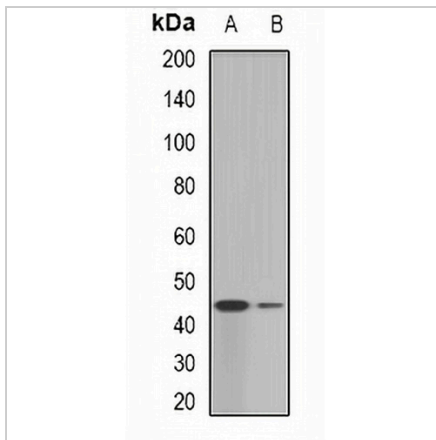
Description	Rabbit polyclonal antibody to GALT
Specificity	Recognizes endogenous levels of GALT protein.
Antibody Type	Primary antibody
Immunogen	Recombinant fusion protein of human GALT
Purification	The antibody was purified by immunogen affinity chromatography.
Molecular Weight	Predicted: 31; Observed: 43 kD
Form/Buffer	Liquid in 0.42% Potassium phosphate, 0.87% Sodium chloride, pH 7.3, 30% glycerol, and 0.01% sodium azide.
Alternative Names	Galactose-1-phosphate uridylyltransferase; Gal-1-P uridylyltransferase; UDP-glucose--hexose-1-phosphate uridylyltransferase
Gene Symbol	GALT
Entrez Gene	2592(Human); 14430(Mouse); 298003(Rat)
SwissProt	P07902(Human); Q03249(Mouse); P43424(Rat)

\*AREX continuously optimizes our products. Webpage content may not reflect the latest updates. For inquiries, please contact [info@arexbio.com](mailto:info@arexbio.com) or your local distributor.

\*Clone Number, Reactivity, Source/Host and Clonality can be found in the product name and Key Features section above.

**DATASHEET****GALT Rabbit Polyclonal Antibody**

CAT. NO. APA12845

**DATA**

Western blot analysis of GALT expression in SKOV3 (A), HepG2 (B) whole cell lysates.  
(Predicted band size: 31; 43 kD; Observed band size: 43 kD)

**STORAGE**

Store at 4°C short term. For long term storage, store at -20°C, avoiding freeze/thaw cycles.

**NOTE**

For Research Use Only. Not for diagnostic, therapeutics, prophylactic or in vivo use.