

**DATASHEET**

**OXA1L Rabbit Polyclonal Antibody**

CAT. NO. APA12849

**KEY FEATURES**

Target	OXA1L	Source / Host	Rabbit
Reactivity	Human, Mouse	Clonality	Polyclonal
Applications	WB	Conjugation	Unconjugated
Form / Buffer	Liquid in 0.42% Potassium phosphate, 0.87% Sodium chloride, pH 7.3, 30% glycerol, and 0.01% sodium azide.		Storage at -20°C

**BACKGROUND**

Mitochondrial membrane insertase that mediates the cotranslational insertion of integral membrane proteins into the mitochondrial inner membrane . Essential for the activity and assembly of cytochrome oxidase . Required for the correct biogenesis of ATP synthase and complex I in mitochondria .

**APPLICATION**

To ensure optimal assay performance, AREX recommends conducting reagent titration tailored to each testing system for optimal detection results.

WB	1:500 - 1:1000
----	----------------

\*Results are sample-specific. Please refer to your local assay conditions and test parameters for reference.

**PRODUCT OVERVIEW**

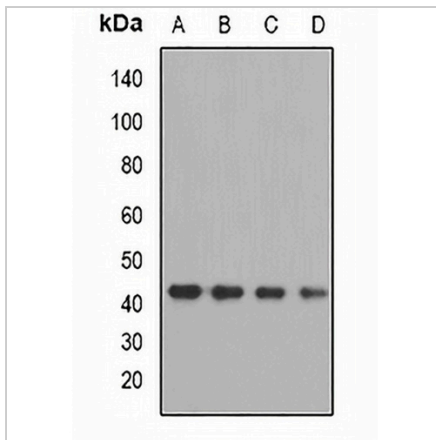
Description	Rabbit polyclonal antibody to OXA1L
Specificity	Recognizes endogenous levels of OXA1L protein.
Antibody Type	Primary antibody
Immunogen	Recombinant fusion protein of human OXA1L
Purification	The antibody was purified by immunogen affinity chromatography.
Molecular Weight	Predicted: 28; Observed: 41 kD
Form/Buffer	Liquid in 0.42% Potassium phosphate, 0.87% Sodium chloride, pH 7.3, 30% glycerol, and 0.01% sodium azide.
Alternative Names	Mitochondrial inner membrane protein OXA1L; Hsa; OXA1Hs; Oxidase assembly 1-like protein; OXA1-like protein
Gene Symbol	OXA1L
Entrez Gene	5018(Human); 69089(Mouse)
SwissProt	Q15070(Human); Q8BGA9(Mouse)

\*AREX continuously optimizes our products. Webpage content may not reflect the latest updates. For inquiries, please contact [info@arexbio.com](mailto:info@arexbio.com) or your local distributor.

\*Clone Number, Reactivity, Source/Host and Clonality can be found in the product name and Key Features section above.

**DATASHEET****OXA1L Rabbit Polyclonal Antibody**

CAT. NO. APA12849

**DATA**

Western blot analysis of OXA1L expression in MCF7 (A), A549 (B), mouse kidney (C), mouse liver (D) whole cell lysates. (Predicted band size: 28; 46; 48 kD; Observed band size: 41 kD)

**STORAGE**

Store at 4°C short term. For long term storage, store at -20°C, avoiding freeze/thaw cycles.

**NOTE**

For Research Use Only. Not for diagnostic, therapeutics, prophylactic or in vivo use.