

DATASHEET

PGM1 Rabbit Polyclonal Antibody

CAT. NO. APA12850

KEY FEATURES

Target	PGM1	Source / Host	Rabbit
Reactivity	Human, Mouse, Rat	Clonality	Polyclonal
Applications	WB	Conjugation	Unconjugated
Form / Buffer	Liquid in 0.42% Potassium phosphate, 0.87% Sodium chloride, pH 7.3, 30% glycerol, and 0.01% sodium azide.		Storage at-20°C

BACKGROUND

Catalyzes the reversible isomerization of alpha-D-glucose 1-phosphate to alpha-D-glucose 6-phosphate . The mechanism proceeds via the intermediate compound alpha-D-glucose 1,6-bisphosphate (Probable) . This enzyme participates in both the breakdown and synthesis of glucose .

APPLICATION

To ensure optimal assay performance, AREX recommends conducting reagent titration tailored to each testing system for optimal detection results.

WB	1:500 - 1:1000
----	----------------

*Results are sample-specific. Please refer to your local assay conditions and test parameters for reference.

PRODUCT OVERVIEW

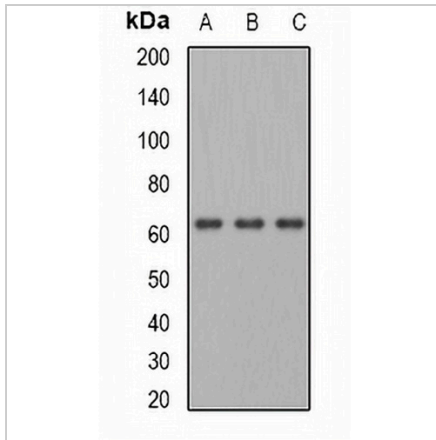
Description	Rabbit polyclonal antibody to PGM1
Specificity	Recognizes endogenous levels of PGM1 protein.
Antibody Type	Primary antibody
Immunogen	Recombinant fusion protein of human PGM1
Purification	The antibody was purified by immunogen affinity chromatography.
Molecular Weight	Predicted: 40; Observed: 61 kD
Form/Buffer	Liquid in 0.42% Potassium phosphate, 0.87% Sodium chloride, pH 7.3, 30% glycerol, and 0.01% sodium azide.
Alternative Names	Phosphoglucomutase-1; PGM 1; Glucose phosphomutase 1
Gene Symbol	PGM1
Entrez Gene	5236(Human); 72157(Mouse)
SwissProt	P36871(Human); Q9D0F9(Mouse); P38652(Rat)

*AREX continuously optimizes our products. Webpage content may not reflect the latest updates. For inquiries, please contact info@arexbio.com or your local distributor.

*Clone Number, Reactivity, Source/Host and Clonality can be found in the product name and Key Features section above.

DATASHEET**PGM1 Rabbit Polyclonal Antibody**

CAT. NO. APA12850

DATA

Western blot analysis of PGM1 expression in HepG2 (A), mouse heart (B), rat liver (C) whole cell lysates. (Predicted band size: 40; 61; 63 kD; Observed band size: 61 kD)

STORAGE

Store at 4°C short term. For long term storage, store at -20°C, avoiding freeze/thaw cycles.

NOTE

For Research Use Only. Not for diagnostic, therapeutics, prophylactic or in vivo use.