

DATASHEET

BAF60A Rabbit Polyclonal Antibody

CAT. NO. APA12856

KEY FEATURES

Target	BAF60A	Source / Host	Rabbit
Reactivity	Human, Mouse, Rat	Clonality	Polyclonal
Applications	WB	Conjugation	Unconjugated
Form / Buffer	Liquid in 0.42% Potassium phosphate, 0.87% Sodium chloride, pH 7.3, 30% glycerol, and 0.01% sodium azide.		Storage at -20°C

BACKGROUND

Involved in transcriptional activation and repression of select genes by chromatin remodeling (alteration of DNA-nucleosome topology). Component of SWI/SNF chromatin remodeling complexes that carry out key enzymatic activities, changing chromatin structure by altering DNA-histone contacts within a nucleosome in an ATP-dependent manner. Component of SWI/SNF chromatin remodeling complexes that carry out key enzymatic activities, changing chromatin structure by altering DNA-histone contacts within a nucleosome in an ATP-dependent manner. Belongs to the neural progenitors-specific chromatin remodeling complex (npBAF complex) and the neuron-specific chromatin remodeling complex (nBAF complex).

APPLICATION

To ensure optimal assay performance, AREX recommends conducting reagent titration tailored to each testing system for optimal detection results.

WB	1:500 - 1:2000
----	----------------

*Results are sample-specific. Please refer to your local assay conditions and test parameters for reference.

PRODUCT OVERVIEW

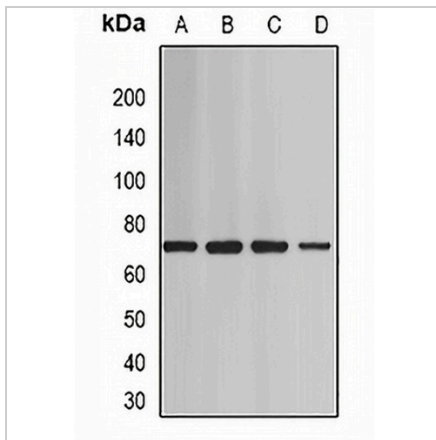
Description	Rabbit polyclonal antibody to BAF60A
Specificity	Recognizes endogenous levels of BAF60A protein.
Antibody Type	Primary antibody
Immunogen	Recombinant fusion protein of human BAF60A
Purification	The antibody was purified by immunogen affinity chromatography.
Molecular Weight	Predicted: 53; Observed: 70 kD
Form/Buffer	Liquid in 0.42% Potassium phosphate, 0.87% Sodium chloride, pH 7.3, 30% glycerol, and 0.01% sodium azide.
Alternative Names	BAF60A; SWI/SNF-related matrix-associated actin-dependent regulator of chromatin subfamily D member 1; 60 kDa BRG-1/Brm-associated factor subunit A; BRG1-associated factor 60A; BAF60A; SWI/SNF complex 60 kDa subunit
Gene Symbol	SMARCD1
Entrez Gene	6602(Human); 83797(Mouse)
SwissProt	Q96GM5(Human); Q61466(Mouse)

*AREX continuously optimizes our products. Webpage content may not reflect the latest updates. For inquiries, please contact info@arexbio.com or your local distributor.

*Clone Number, Reactivity, Source/Host and Clonality can be found in the product name and Key Features section above.

DATASHEET**BAF60A Rabbit Polyclonal Antibody**

CAT. NO. APA12856

DATA

Western blot analysis of BAF60A expression in Jurkat (A), mouse heart (B), mouse testis (C), rat brain (D) whole cell lysates. (Predicted band size: 53; 58 kD; Observed band size: 70 kD)

STORAGE

Store at 4°C short term. For long term storage, store at -20°C, avoiding freeze/thaw cycles.

NOTE

For Research Use Only. Not for diagnostic, therapeutics, prophylactic or in vivo use.