

DATASHEET

CFDP1 Rabbit Polyclonal Antibody

CAT. NO. APA12863

KEY FEATURES

Target	CFDP1	Source / Host	Rabbit
Reactivity	Human, Mouse, Rat	Clonality	Polyclonal
Applications	WB	Conjugation	Unconjugated
Form / Buffer	Liquid in 0.42% Potassium phosphate, 0.87% Sodium chloride, pH 7.3, 30% glycerol, and 0.01% sodium azide.		Storage at -20°C

BACKGROUND

Required for the structural stability of pericentromeric heterochromatin . Regulates heterochromatin state by stabilizing CBX5/HP1 alpha and H3K9me3 at major satellites and CENPA at minor satellites and is required for incorporation of histone H2AZ1/H2AZ into chromatin . Maintenance of chromatin structure promotes binding of guanine-nucleotide releasing factor RCC1 to minor and major satellite repeats . Chromatin-bound RCC1 maintains high levels of GTP-bound RAN near the centromeric heterochromatin, facilitating RAN-mediated microtubule nucleation during mitosis . Plays a role in craniofacial development . Required to maintain normal cell function in embryonic development .

APPLICATION

To ensure optimal assay performance, AREX recommends conducting reagent titration tailored to each testing system for optimal detection results.

WB	1:500 - 1:2000
----	----------------

*Results are sample-specific. Please refer to your local assay conditions and test parameters for reference.

PRODUCT OVERVIEW

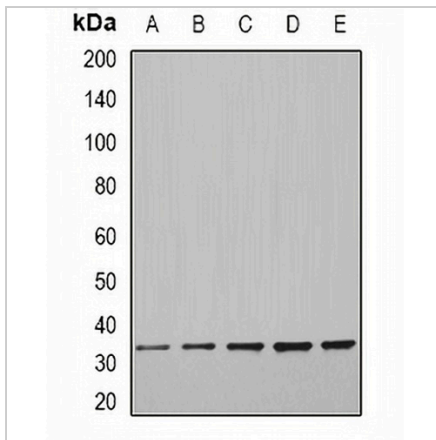
Description	Rabbit polyclonal antibody to CFDP1
Specificity	Recognizes endogenous levels of CFDP1 protein.
Antibody Type	Primary antibody
Immunogen	Recombinant fusion protein of human CFDP1
Purification	The antibody was purified by immunogen affinity chromatography.
Molecular Weight	Predicted: 24; Observed: 33 kD
Form/Buffer	Liquid in 0.42% Potassium phosphate, 0.87% Sodium chloride, pH 7.3, 30% glycerol, and 0.01% sodium azide.
Alternative Names	BCNT; Craniofacial development protein 1; Bucentaur
Gene Symbol	CFDP1
Entrez Gene	10428(Human); 23837(Mouse); 292027(Rat)
SwissProt	Q9UEE9(Human); O88271(Mouse); Q75UQ2(Rat)

*AREX continuously optimizes our products. Webpage content may not reflect the latest updates. For inquiries, please contact info@arexbio.com or your local distributor.

*Clone Number, Reactivity, Source/Host and Clonality can be found in the product name and Key Features section above.

DATASHEET**CFDP1 Rabbit Polyclonal Antibody**

CAT. NO. APA12863

DATA

Western blot analysis of CFDP1 expression in MCF7 (A), SKOV3 (B), mouse brain (C), mouse liver (D), rat spleen (E) whole cell lysates. (Predicted band size: 24; 33 kD; Observed band size: 33 kD)

STORAGE

Store at 4°C short term. For long term storage, store at -20°C, avoiding freeze/thaw cycles.

NOTE

For Research Use Only. Not for diagnostic, therapeutics, prophylactic or in vivo use.