

DATASHEET

PHF21A Rabbit Polyclonal Antibody

CAT. NO. APA12864

KEY FEATURES

Target	PHF21A	Source / Host	Rabbit
Reactivity	Human, Mouse	Clonality	Polyclonal
Applications	WB	Conjugation	Unconjugated
Form / Buffer	Liquid in 0.42% Potassium phosphate, 0.87% Sodium chloride, pH 7.3, 30% glycerol, and 0.01% sodium azide.		Storage at -20°C

BACKGROUND

Component of the BHC complex, a corepressor complex that represses transcription of neuron-specific genes in non-neuronal cells. The BHC complex is recruited at RE1/NRSE sites by REST and acts by deacetylating and demethylating specific sites on histones, thereby acting as a chromatin modifier. In the BHC complex, it may act as a scaffold. Inhibits KDM1A-mediated demethylation of 'Lys-4' of histone H3 in vitro, suggesting a role in demethylation regulation.

APPLICATION

To ensure optimal assay performance, AREX recommends conducting reagent titration tailored to each testing system for optimal detection results.

WB	1:500 - 1:2000
----	----------------

*Results are sample-specific. Please refer to your local assay conditions and test parameters for reference.

PRODUCT OVERVIEW

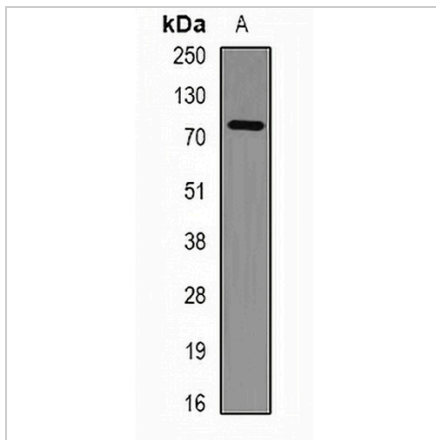
Description	Rabbit polyclonal antibody to PHF21A
Specificity	Recognizes endogenous levels of PHF21A protein.
Antibody Type	Primary antibody
Immunogen	Recombinant fusion protein of human PHF21A
Purification	The antibody was purified by immunogen affinity chromatography.
Molecular Weight	Predicted: 70; Observed: 70-80 kD
Form/Buffer	Liquid in 0.42% Potassium phosphate, 0.87% Sodium chloride, pH 7.3, 30% glycerol, and 0.01% sodium azide.
Alternative Names	BHC80; KIAA1696; PHD finger protein 21A; BHC80a; BRAF35-HDAC complex protein BHC80
Gene Symbol	PHF21A
Entrez Gene	51317(Human); 192285(Mouse)
SwissProt	Q96BD5(Human); Q6ZPK0(Mouse)

*AREX continuously optimizes our products. Webpage content may not reflect the latest updates. For inquiries, please contact info@arexbio.com or your local distributor.

*Clone Number, Reactivity, Source/Host and Clonality can be found in the product name and Key Features section above.

DATASHEET**PHF21A Rabbit Polyclonal Antibody**

CAT. NO. APA12864

DATA

Western blot analysis of PHF21A expression in HeLa (A) whole cell lysates. (Predicted band size: 70; 74 kD; Observed band size: 70-80 kD)

STORAGE

Store at 4°C short term. For long term storage, store at -20°C, avoiding freeze/thaw cycles.

NOTE

For Research Use Only. Not for diagnostic, therapeutics, prophylactic or in vivo use.