

DATASHEET

CAT1 Rabbit Polyclonal Antibody

CAT. NO. APA12871

KEY FEATURES

Target	CAT1	Source / Host	Rabbit
Reactivity	Human, Mouse	Clonality	Polyclonal
Applications	WB, IHC	Conjugation	Unconjugated
Form / Buffer	Liquid in 0.42% Potassium phosphate, 0.87% Sodium chloride, pH 7.3, 30% glycerol, and 0.01% sodium azide.		Storage at -20°C

BACKGROUND

Catalyzes the reversible transfer of acyl groups from carnitine to coenzyme A (CoA) and regulates the acyl-CoA/CoA ratio. Also plays a crucial role in the transport of fatty acids for beta-oxidation and regulates the acyl-CoA/CoA ratio. Also plays a crucial role in the transport of fatty acids for beta-oxidation . Responsible for the synthesis of short- and branched-chain acylcarnitines . Active towards some branched-chain amino acid oxidation pathway (BCAAO) intermediates . Trans-2-enoyl-CoAs and 2-methylacyl-CoAs are poor substrates .

APPLICATION

To ensure optimal assay performance, AREX recommends conducting reagent titration tailored to each testing system for optimal detection results.

WB	1:500 - 1:1000
IHC	1:50 - 1:100

*Results are sample-specific. Please refer to your local assay conditions and test parameters for reference.

PRODUCT OVERVIEW

Description	Rabbit polyclonal antibody to CAT1
Specificity	Recognizes endogenous levels of CAT1 protein.
Antibody Type	Primary antibody
Immunogen	Recombinant fusion protein of human CAT1
Purification	The antibody was purified by immunogen affinity chromatography.
Molecular Weight	Predicted: 70 kD; Observed: 70 kD
Form/Buffer	Liquid in 0.42% Potassium phosphate, 0.87% Sodium chloride, pH 7.3, 30% glycerol, and 0.01% sodium azide.
Alternative Names	CAT1; Carnitine O-acetyltransferase; Carnitine acetylase; Carnitine acetyltransferase; CAT; CrAT
Gene Symbol	CRAT
Entrez Gene	1384(Human); 12908(Mouse)
SwissProt	P43155(Human); P47934(Mouse)

*AREX continuously optimizes our products. Webpage content may not reflect the latest updates. For inquiries, please contact info@arexbio.com or your local distributor.

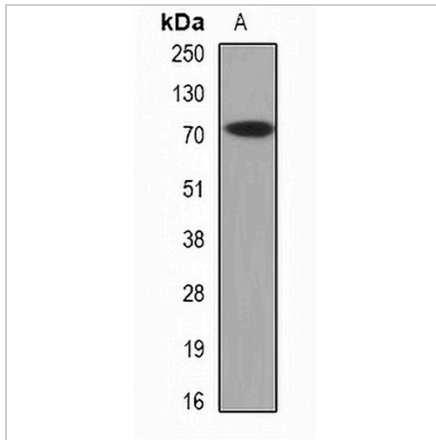
*Clone Number, Reactivity, Source/Host and Clonality can be found in the product name and Key Features section above.

DATASHEET

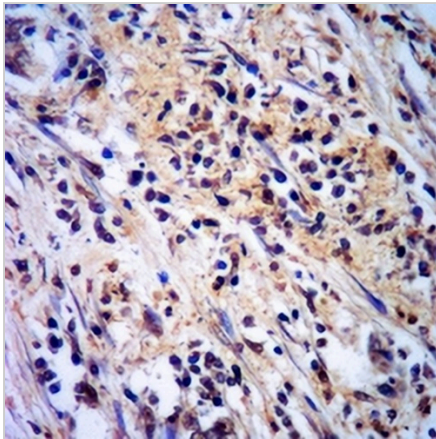
CAT1 Rabbit Polyclonal Antibody

CAT. NO. APA12871

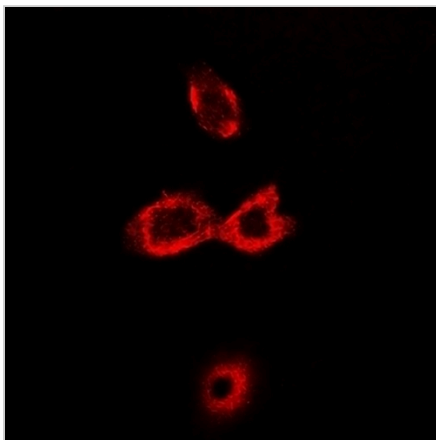
DATA



Western blot analysis of CAT1 expression in mouse skeletal muscle (A) whole cell lysates. (Predicted band size: 70 kD; Observed band size: 70 kD)



Immunohistochemical analysis of CAT1 staining in human colorectal cancer formalin fixed paraffin embedded tissue section. The section was pre-treated using heat mediated antigen retrieval with sodium citrate buffer (pH 6.0). The section was then incubated with the antibody at room temperature and detected using an HRP conjugated compact polymer system. DAB was used as the chromogen. The section was then counterstained with haematoxylin and mounted with DPX.



Immunofluorescent analysis of CAT1 staining in Hela cells. Formalin-fixed cells were permeabilized with 0.1% Triton X-100 in TBS for 5-10 minutes and blocked with 3% BSA-PBS for 30 minutes at room temperature. Cells were probed with the primary antibody in 3% BSA-PBS and incubated overnight at 4 °C in a humidified chamber. Cells were washed with PBST and incubated with a DyLight 594-conjugated secondary antibody (red) in PBS at room temperature in the dark.

STORAGE

Store at 4°C short term. For long term storage, store at -20°C, avoiding freeze/thaw cycles.

NOTE

For Research Use Only. Not for diagnostic, therapeutics, prophylactic or in vivo use.