

DATASHEET

Stomatin Rabbit Polyclonal Antibody

CAT. NO. APA12874

KEY FEATURES

Target	Stomatin	Source / Host	Rabbit
Reactivity	Human, Mouse, Rat	Clonality	Polyclonal
Applications	WB	Conjugation	Unconjugated
Form / Buffer	Liquid in 0.42% Potassium phosphate, 0.87% Sodium chloride, pH 7.3, 30% glycerol, and 0.01% sodium azide.		Storage at -20°C

BACKGROUND

Regulates ion channel activity and transmembrane ion transport. Regulates ASIC2 and ASIC3 channel activity.

APPLICATION

To ensure optimal assay performance, AREX recommends conducting reagent titration tailored to each testing system for optimal detection results.

WB	1:500 - 1:1000
----	----------------

*Results are sample-specific. Please refer to your local assay conditions and test parameters for reference.

PRODUCT OVERVIEW

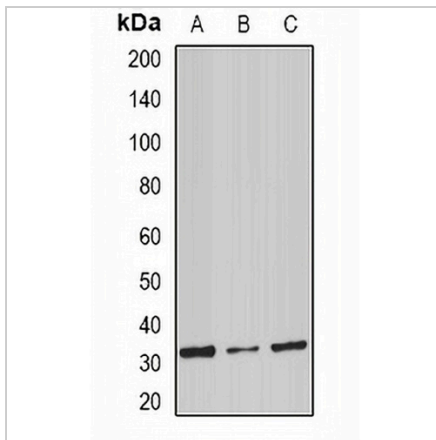
Description	Rabbit polyclonal antibody to Stomatin
Specificity	Recognizes endogenous levels of Stomatin protein.
Antibody Type	Primary antibody
Immunogen	Recombinant fusion protein of human Stomatin
Purification	The antibody was purified by immunogen affinity chromatography.
Molecular Weight	Predicted: 13; Observed: 32 kD
Form/Buffer	Liquid in 0.42% Potassium phosphate, 0.87% Sodium chloride, pH 7.3, 30% glycerol, and 0.01% sodium azide.
Alternative Names	BND7; EPB72; Erythrocyte band 7 integral membrane protein; Protein 7.2b; Stomatin
Gene Symbol	STOM
Entrez Gene	2040(Human); 13830(Mouse)
SwissProt	P27105(Human); P54116(Mouse)

*AREX continuously optimizes our products. Webpage content may not reflect the latest updates. For inquiries, please contact info@arexbio.com or your local distributor.

*Clone Number, Reactivity, Source/Host and Clonality can be found in the product name and Key Features section above.

DATASHEET**Stomatin Rabbit Polyclonal Antibody**

CAT. NO. APA12874

DATA

Western blot analysis of Stomatin expression in mouse spleen (A), mouse heart (B), rat liver (C) whole cell lysates. (Predicted band size: 13; 31 kD; Observed band size: 32 kD)

STORAGE

Store at 4°C short term. For long term storage, store at -20°C, avoiding freeze/thaw cycles.

NOTE

For Research Use Only. Not for diagnostic, therapeutics, prophylactic or in vivo use.