

DATASHEET

GRP Rabbit Polyclonal Antibody

CAT. NO. APA12876

KEY FEATURES

Target	GRP	Source / Host	Rabbit
Reactivity	Human, Mouse, Rat	Clonality	Polyclonal
Applications	WB, IF/ICC	Conjugation	Unconjugated
Form / Buffer	Liquid in 0.42% Potassium phosphate, 0.87% Sodium chloride, pH 7.3, 30% glycerol, and 0.01% sodium azide.		Storage at -20°C

BACKGROUND

Stimulates the release of gastrin and other gastrointestinal hormones . Contributes to the perception of prurient stimuli and to the transmission of itch signals in the spinal cord that promote scratching behavior . Contributes primarily to nonhistaminergic itch sensation . In one study, shown to act in the amygdala as part of an inhibitory network which inhibits memory specifically related to learned fear . In another study, shown to act on vasoactive intestinal peptide (VIP)-expressing cells in the auditory cortex, most likely via extrasynaptic diffusion from local and long-range sources, to mediate disinhibition of glutamatergic cells via VIP cell-specific GRPR signaling which leads to enhanced auditory fear memories . Contributes to the regulation of food intake .

APPLICATION

To ensure optimal assay performance, AREX recommends conducting reagent titration tailored to each testing system for optimal detection results.

WB	1:500 - 1:2000
IF/ICC	1:50 - 1:200

*Results are sample-specific. Please refer to your local assay conditions and test parameters for reference.

PRODUCT OVERVIEW

Description	Rabbit polyclonal antibody to GRP
Specificity	Recognizes endogenous levels of GRP protein.
Antibody Type	Primary antibody
Immunogen	Recombinant fusion protein of human GRP
Purification	The antibody was purified by immunogen affinity chromatography.
Molecular Weight	Predicted: 15; Observed: 16 kD
Form/Buffer	Liquid in 0.42% Potassium phosphate, 0.87% Sodium chloride, pH 7.3, 30% glycerol, and 0.01% sodium azide.
Alternative Names	Gastrin-releasing peptide; GRP
Gene Symbol	GRP
Entrez Gene	2922(Human); 225642(Mouse)
SwissProt	P07492(Human); Q8R1I2(Mouse); P24393(Rat)

*AREX continuously optimizes our products. Webpage content may not reflect the latest updates. For inquiries, please contact info@arexbio.com or your local distributor.

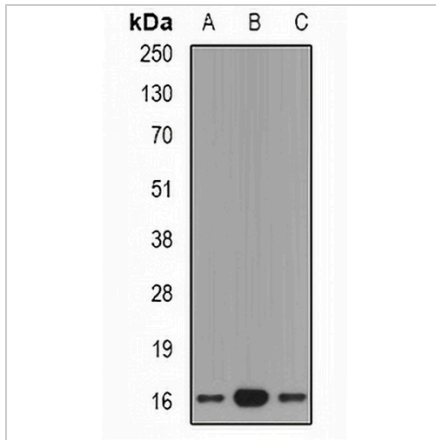
*Clone Number, Reactivity, Source/Host and Clonality can be found in the product name and Key Features section above.

DATASHEET

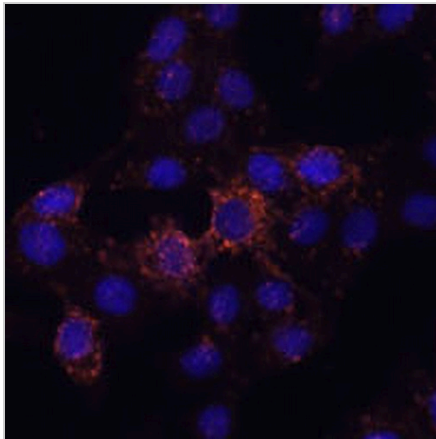
GRP Rabbit Polyclonal Antibody

CAT. NO. APA12876

DATA



Western blot analysis of GRP expression in mouse lung (A), rat brain (B), rat kidney (C) whole cell lysates. (Predicted band size: 15; 16 kD; Observed band size: 16 kD)



Immunofluorescent analysis of GRP staining in HeLa cells. Formalin-fixed cells were permeabilized with 0.1% Triton X-100 in TBS for 5-10 minutes and blocked with 3% BSA-PBS for 30 minutes at room temperature. Cells were probed with the primary antibody in 3% BSA-PBS and incubated overnight at 4 °C in a humidified chamber. Cells were washed with PBST and incubated with a AREX® Fluor 594-conjugated secondary antibody (red) in PBS at room temperature in the dark. DAPI was used to stain the cell nuclei (blue).

STORAGE

Store at 4°C short term. For long term storage, store at -20°C, avoiding freeze/thaw cycles.

NOTE

For Research Use Only. Not for diagnostic, therapeutics, prophylactic or in vivo use.