

DATASHEET

MsrA Rabbit Polyclonal Antibody

CAT. NO. APA12879

KEY FEATURES

Target	MsrA	Source / Host	Rabbit
Reactivity	Human, Mouse, Rat	Clonality	Polyclonal
Applications	WB, IHC, IF/ICC	Conjugation	Unconjugated
Form / Buffer	Liquid in 0.42% Potassium phosphate, 0.87% Sodium chloride, pH 7.3, 30% glycerol, and 0.01% sodium azide.		Storage at-20°C

BACKGROUND

Catalyzes the reversible oxidation-reduction of methionine sulfoxide in proteins to methionine. Has an important function as a repair enzyme for proteins that have been inactivated by oxidation. Plays a crucial role in repairing oxidized methionine residues in key lens proteins, such as alpha-crystallin (CRYAA/CRYAB) and cytochrome c (CYCS), thereby restoring their function and maintaining lens transparency.

APPLICATION

To ensure optimal assay performance, AREX recommends conducting reagent titration tailored to each testing system for optimal detection results.

WB	1:500 - 1:2000
IHC	1:50 - 1:200
IF/ICC	1:50 - 1:200

*Results are sample-specific. Please refer to your local assay conditions and test parameters for reference.

PRODUCT OVERVIEW

Description	Rabbit polyclonal antibody to MsrA
Specificity	Recognizes endogenous levels of MsrA protein.
Antibody Type	Primary antibody
Immunogen	Recombinant fusion protein of human MsrA
Purification	The antibody was purified by immunogen affinity chromatography.
Molecular Weight	Predicted: 18; Observed: 26 kD
Form/Buffer	Liquid in 0.42% Potassium phosphate, 0.87% Sodium chloride, pH 7.3, 30% glycerol, and 0.01% sodium azide.
Alternative Names	Mitochondrial peptide methionine sulfoxide reductase; Peptide-methionine (S)-S-oxide reductase; Peptide Met(O) reductase; Protein-methionine-S-oxide reductase; PMSR
Gene Symbol	MSRA
Entrez Gene	4482(Human); 110265(Mouse); 29447(Rat)
SwissProt	Q9UJ68(Human); Q9D6Y7(Mouse); Q923M1(Rat)

*AREX continuously optimizes our products. Webpage content may not reflect the latest updates. For inquiries, please contact info@arexbio.com or your local distributor.

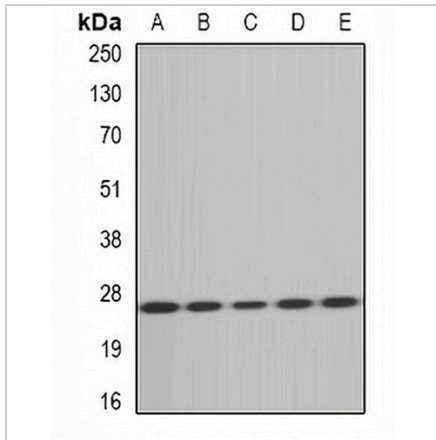
*Clone Number, Reactivity, Source/Host and Clonality can be found in the product name and Key Features section above.

DATASHEET

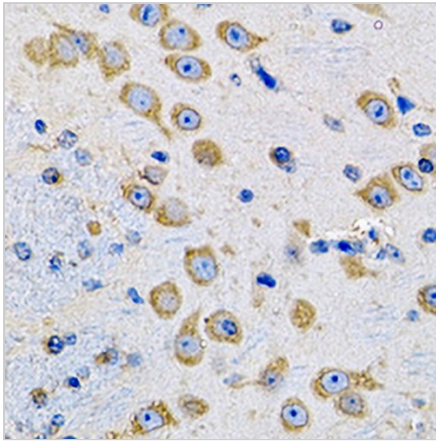
MsrA Rabbit Polyclonal Antibody

CAT. NO. APA12879

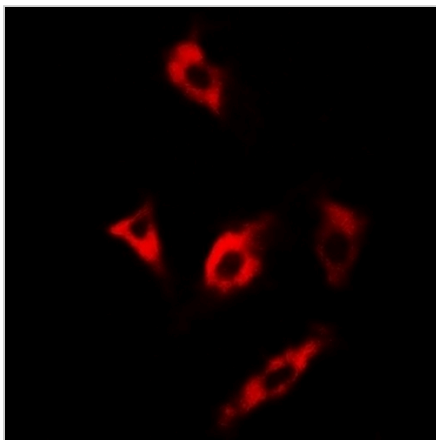
DATA



Western blot analysis of MsrA expression in HT29 (A), HeLa (B), mouse heart (C), rat kidney (D), rat liver (E) whole cell lysates. (Predicted band size: 18; 21; 23; 26 kD; Observed band size: 26 kD)



Immunohistochemical analysis of MsrA staining in mouse brain formalin fixed paraffin embedded tissue section. The section was pre-treated using heat mediated antigen retrieval with sodium citrate buffer (pH 6.0). The section was then incubated with the antibody at room temperature and detected using an HRP conjugated compact polymer system. DAB was used as the chromogen. The section was then counterstained with haematoxylin and mounted with DPX.



Immunofluorescent analysis of MsrA staining in U2OS cells. Formalin-fixed cells were permeabilized with 0.1% Triton X-100 in TBS for 5-10 minutes and blocked with 3% BSA-PBS for 30 minutes at room temperature. Cells were probed with the primary antibody in 3% BSA-PBS and incubated overnight at 4 °C in a humidified chamber. Cells were washed with PBST and incubated with a DyLight 594-conjugated secondary antibody (red) in PBS at room temperature in the dark.

STORAGE

Store at 4°C short term. For long term storage, store at -20°C, avoiding freeze/thaw cycles.

NOTE

For Research Use Only. Not for diagnostic, therapeutics, prophylactic or in vivo use.