

DATASHEET

OGDH Rabbit Polyclonal Antibody

CAT. NO. APA12880

KEY FEATURES

Target	OGDH	Source / Host	Rabbit
Reactivity	Human, Mouse, Rat	Clonality	Polyclonal
Applications	WB, IHC, IF/ICC	Conjugation	Unconjugated
Form / Buffer	Liquid in 0.42% Potassium phosphate, 0.87% Sodium chloride, pH 7.3, 30% glycerol, and 0.01% sodium azide.		Storage at -20°C

BACKGROUND

2-oxoglutarate dehydrogenase (E1 α) component of the 2-oxoglutarate dehydrogenase complex (OGDHC) component of the 2-oxoglutarate dehydrogenase complex (OGDHC). Participates in the first step, rate limiting for the overall conversion of 2-oxoglutarate to succinyl-CoA and CO₂ catalyzed by the whole OGDHC. Catalyzes the irreversible decarboxylation of 2-oxoglutarate (alpha-ketoglutarate) via the thiamine diphosphate (ThDP) cofactor and subsequent transfer of the decarboxylated acyl intermediate on an oxidized dihydrolipoyl group that is covalently amidated to the E2 enzyme (dihydrolipoylsine-residue succinyltransferase or DLST).

APPLICATION

To ensure optimal assay performance, AREX recommends conducting reagent titration tailored to each testing system for optimal detection results.

WB	1:500 - 1:2000
IHC	1:50 - 1:200
IF/ICC	1:50 - 1:200

*Results are sample-specific. Please refer to your local assay conditions and test parameters for reference.

PRODUCT OVERVIEW

Description	Rabbit polyclonal antibody to OGDH
Specificity	Recognizes endogenous levels of OGDH protein.
Antibody Type	Primary antibody
Immunogen	Recombinant fusion protein of human OGDH
Purification	The antibody was purified by immunogen affinity chromatography.
Molecular Weight	Predicted: 48; Observed: 116 kD
Form/Buffer	Liquid in 0.42% Potassium phosphate, 0.87% Sodium chloride, pH 7.3, 30% glycerol, and 0.01% sodium azide.
Alternative Names	2-oxoglutarate dehydrogenase mitochondrial; 2-oxoglutarate dehydrogenase complex component E1; OGDC-E1; Alpha-ketoglutarate dehydrogenase
Gene Symbol	OGDH
Entrez Gene	4967(Human); 18293(Mouse); 360975(Rat)
SwissProt	Q02218(Human); Q60597(Mouse); Q5XI78(Rat)

*AREX continuously optimizes our products. Webpage content may not reflect the latest updates. For inquiries, please contact info@arexbio.com or your local distributor.

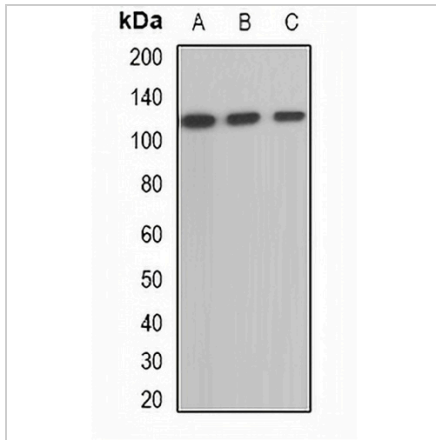
*Clone Number, Reactivity, Source/Host and Clonality can be found in the product name and Key Features section above.

DATASHEET

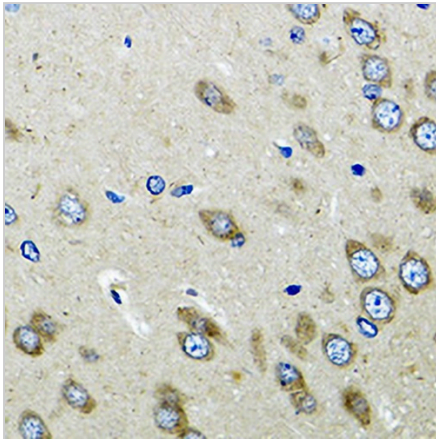
OGDH Rabbit Polyclonal Antibody

CAT. NO. APA12880

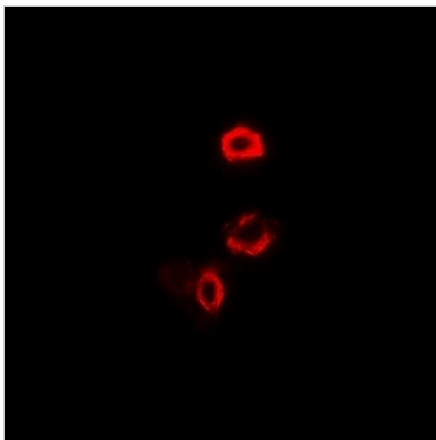
DATA



Western blot analysis of OGDH expression in mouse heart (A), mouse brain (B), rat kidney (C) whole cell lysates. (Predicted band size: 48; 115 kD; Observed band size: 116 kD)



Immunohistochemical analysis of OGDH staining in rat brain formalin fixed paraffin embedded tissue section. The section was pre-treated using heat mediated antigen retrieval with sodium citrate buffer (pH 6.0). The section was then incubated with the antibody at room temperature and detected using an HRP conjugated compact polymer system. DAB was used as the chromogen. The section was then counterstained with haematoxylin and mounted with DPX.



Immunofluorescent analysis of OGDH staining in U2OS cells. Formalin-fixed cells were permeabilized with 0.1% Triton X-100 in TBS for 5-10 minutes and blocked with 3% BSA-PBS for 30 minutes at room temperature. Cells were probed with the primary antibody in 3% BSA-PBS and incubated overnight at 4 °C in a humidified chamber. Cells were washed with PBST and incubated with a DyLight 594-conjugated secondary antibody (red) in PBS at room temperature in the dark.

STORAGE

Store at 4°C short term. For long term storage, store at -20°C, avoiding freeze/thaw cycles.

NOTE

For Research Use Only. Not for diagnostic, therapeutics, prophylactic or in vivo use.