

DATASHEET

PYGB Rabbit Polyclonal Antibody

CAT. NO. APA12886

KEY FEATURES

Target	PYGB	Source / Host	Rabbit
Reactivity	Human, Mouse, Rat	Clonality	Polyclonal
Applications	WB	Conjugation	Unconjugated
Form / Buffer	Liquid in 0.42% Potassium phosphate, 0.87% Sodium chloride, pH 7.3, 30% glycerol, and 0.01% sodium azide.		Storage at-20°C

BACKGROUND

Glycogen phosphorylase that regulates glycogen mobilization . Phosphorylase is an important allosteric enzyme in carbohydrate metabolism . Enzymes from different sources differ in their regulatory mechanisms and in their natural substrates . However, all known phosphorylases share catalytic and structural properties .

APPLICATION

To ensure optimal assay performance, AREX recommends conducting reagent titration tailored to each testing system for optimal detection results.

WB	1:500 - 1:1000
----	----------------

*Results are sample-specific. Please refer to your local assay conditions and test parameters for reference.

PRODUCT OVERVIEW

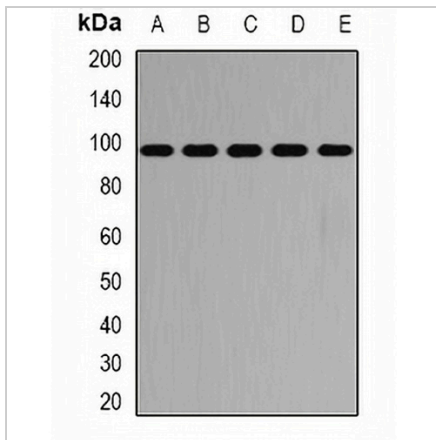
Description	Rabbit polyclonal antibody to PYGB
Specificity	Recognizes endogenous levels of PYGB protein.
Antibody Type	Primary antibody
Immunogen	Recombinant fusion protein of human PYGB
Purification	The antibody was purified by immunogen affinity chromatography.
Molecular Weight	Predicted: 96 kD; Observed: 100 kD
Form/Buffer	Liquid in 0.42% Potassium phosphate, 0.87% Sodium chloride, pH 7.3, 30% glycerol, and 0.01% sodium azide.
Alternative Names	Glycogen phosphorylase, brain form
Gene Symbol	PYGB
Entrez Gene	5834(Human); 110078(Mouse); 25739(Rat)
SwissProt	P11216(Human); Q8CI94(Mouse); P53534(Rat)

*AREX continuously optimizes our products. Webpage content may not reflect the latest updates. For inquiries, please contact info@arexbio.com or your local distributor.

*Clone Number, Reactivity, Source/Host and Clonality can be found in the product name and Key Features section above.

DATASHEET**PYGB Rabbit Polyclonal Antibody**

CAT. NO. APA12886

DATA

Western blot analysis of PYGB expression in SW620 (A), HT29 (B), mouse heart (C), mouse lung (D), rat brain (E) whole cell lysates. (Predicted band size: 96 kD; Observed band size: 100 kD)

STORAGE

Store at 4°C short term. For long term storage, store at -20°C, avoiding freeze/thaw cycles.

NOTE

For Research Use Only. Not for diagnostic, therapeutics, prophylactic or in vivo use.