

**DATASHEET**

**SNAP-gamma Rabbit Polyclonal Antibody**

CAT. NO. APA12897

**KEY FEATURES**

Target	SNAP-gamma	Source / Host	Rabbit
Reactivity	Human, Mouse, Rat	Clonality	Polyclonal
Applications	WB	Conjugation	Unconjugated
Form / Buffer	Liquid in 0.42% Potassium phosphate, 0.87% Sodium chloride, pH 7.3, 30% glycerol, and 0.01% sodium azide.	Storage	at-20°C

**BACKGROUND**

Required for vesicular transport between the endoplasmic reticulum and the Golgi apparatus.

**APPLICATION**

To ensure optimal assay performance, AREX recommends conducting reagent titration tailored to each testing system for optimal detection results.

WB	1:500 - 1:1000
----	----------------

\*Results are sample-specific. Please refer to your local assay conditions and test parameters for reference.

**PRODUCT OVERVIEW**

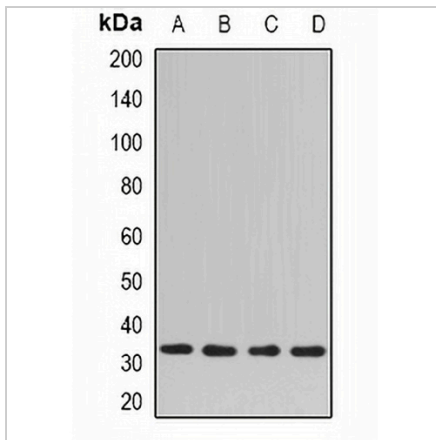
Description	Rabbit polyclonal antibody to SNAP-gamma
Specificity	Recognizes endogenous levels of SNAP-gamma protein.
Antibody Type	Primary antibody
Immunogen	Recombinant fusion protein of human SNAP-gamma
Purification	The antibody was purified by immunogen affinity chromatography.
Molecular Weight	Predicted: 25; Observed: 35 kD
Form/Buffer	Liquid in 0.42% Potassium phosphate, 0.87% Sodium chloride, pH 7.3, 30% glycerol, and 0.01% sodium azide.
Alternative Names	SNAPG; Gamma-soluble NSF attachment protein; SNAP-gamma; N-ethylmaleimide-sensitive factor attachment protein gamma
Gene Symbol	NAPG
Entrez Gene	8774(Human); 108123(Mouse)
SwissProt	Q99747(Human); Q9CWZ7(Mouse)

\*AREX continuously optimizes our products. Webpage content may not reflect the latest updates. For inquiries, please contact [info@arexbio.com](mailto:info@arexbio.com) or your local distributor.

\*Clone Number, Reactivity, Source/Host and Clonality can be found in the product name and Key Features section above.

**DATASHEET****SNAP-gamma Rabbit Polyclonal Antibody**

CAT. NO. APA12897

**DATA**

Western blot analysis of SNAP-gamma expression in Hela (A), mouse spleen (B), mouse lung (C), rat brain (D) whole cell lysates. (Predicted band size: 25; 34 kD; Observed band size: 35 kD)

**STORAGE**

Store at 4°C short term. For long term storage, store at -20°C, avoiding freeze/thaw cycles.

**NOTE**

For Research Use Only. Not for diagnostic, therapeutics, prophylactic or in vivo use.